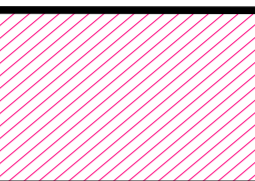
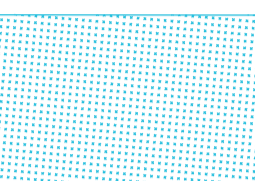
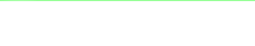



Notes: DO NOT SCALE DRAWING
 Dimensions provided are indicative only, and should be confirmed and read in conjunction with the Architect's construction drawings at such times as they are available, and/or from site measurement.
 All setting out to be in accordance with the Architect's drawings, any ambiguities to be raised prior to construction.

RESIDUAL RISK REGISTER			
No.	Description of Hazard	Control Measures	Action By
	Standard construction		

-  Denotes extent of adopted Highway to be "Stopped up"
-  Denotes extent of new adopted Highway to be created
-  Extent of existing public highway (to be confirmed by GCC)
-  Extent of proposed public highway (to be confirmed by GCC)

- NOTES:
- All works to be carried out strictly in accordance with the Local Authority (GCC's) Highways specification for street works.
 - All Statutory Undertakers, including cable television companies, must be contacted prior to commencing any works to ascertain the location and depth of their apparatus. In the event of any protection or diversionary works being necessary to their apparatus then any costs incurred will be the contractors responsibility both for arranging and any payment.
 - The Contractor shall provide, erect and maintain such traffic signs, lamps, barriers and traffic control signals, and such measures may be necessitated by the construction of the works in accordance with the recommendations contained in Chapter 8 of the Traffic Signs Manual.
 - The developer and contractor shall confirm they are working in accordance with NJUG Volume 1 Guidelines on the Positioning and Colour Coding of Underground Utilities' Apparatus and Volume 2 Guidelines on the Positioning of Underground Utilities Apparatus for New Development Sites
 - Root barrier to be installed at the back of the adopted footpath to prevent the roots from any proposed new trees undermining the footpath.
 - Retention of the existing kerbline will be subject to inspection and approval by the Local Authority Highways Inspector.
 - Re-use of the existing kerb race will be subject to inspection and approval by the Local Authority Highways Inspector. Reconstruction of the existing channel line to have 300mm overlap of each bluminous layer that is disturbed.
 - 150mm x 50mm back edging kerbs will be laid upturned and flush at footway crossovers.
 - Tactile paving at uncontrolled crossing points to be 400x400mm buff colour blister paving in accordance with DETR guidance on the use of paving surfaces.
 - All substrata structures and unconsolidated material within the construction width of the highway, are to be removed.
 - CBR values and calculations may be required to determine sub-base thickness.
 - Boundary walls will not be adopted.
 - Hinged gully grate and frame to BS EN 124, Grade D400, non-rocking with captive left hand end hinge. Minimum waterway area 800cm squared, Frame depth 100mm. Black coated ductile iron.
 - Any existing gullies that are damaged during construction will be replaced with new ones, as agreed with a representative of the Local Authority Highways department.
 - Hand laying of bluminous materials is not permitted on adoptable carriageway.
 - Tarmac road construction to comply with BS EN 130108
 - The provision of a CCTV survey of any highway drainage, at the developers expense, is required prior to laying the wearing course.
 - Where two or more water services boundary boxes are situated together multi-meter boundary as specified by the Sewerage Undertaker are to be installed.
 - A Covenant will be provided to the benefit of the Local Authority ensuring that no planting or structure greater than 600mm in height to be permanently situated within the visibility splay.

WORK IN PROGRESS

P4	SH	Updated architect layout & existing utilities added	09.11.20
P3	MJB	Updated to show 1/1000 scale @ A3	04.11.20
P2	MJB	Updated to suit Section 247 requirements	25.09.20
P1	MJB	Preliminary Issue	01.04.20
Rev	By	Details	Date
		(P=Preliminary, T=Tender, C=Construction, R=Record)	

Client:
 Paloma Unit Trust

Project:
 Access Park, Gloucester

Drawing Title:
 Area of Public Highway to be "Stopping up"

 CONSULTING CIVIL & STRUCTURAL ENGINEERS
 CHARFORD LODGE
 ROCK HILL
 BROMSGROVE
 WORCS B61 7JH

COMPLETE DESIGN PARTNERSHIP LTD

Date:	01.04.20	Drawing No.	17-7295-2000	Issue Rev.	P 4
Scale:	1:500 @ A1				
Drawn:	MJB				
Chkd:	MJB				

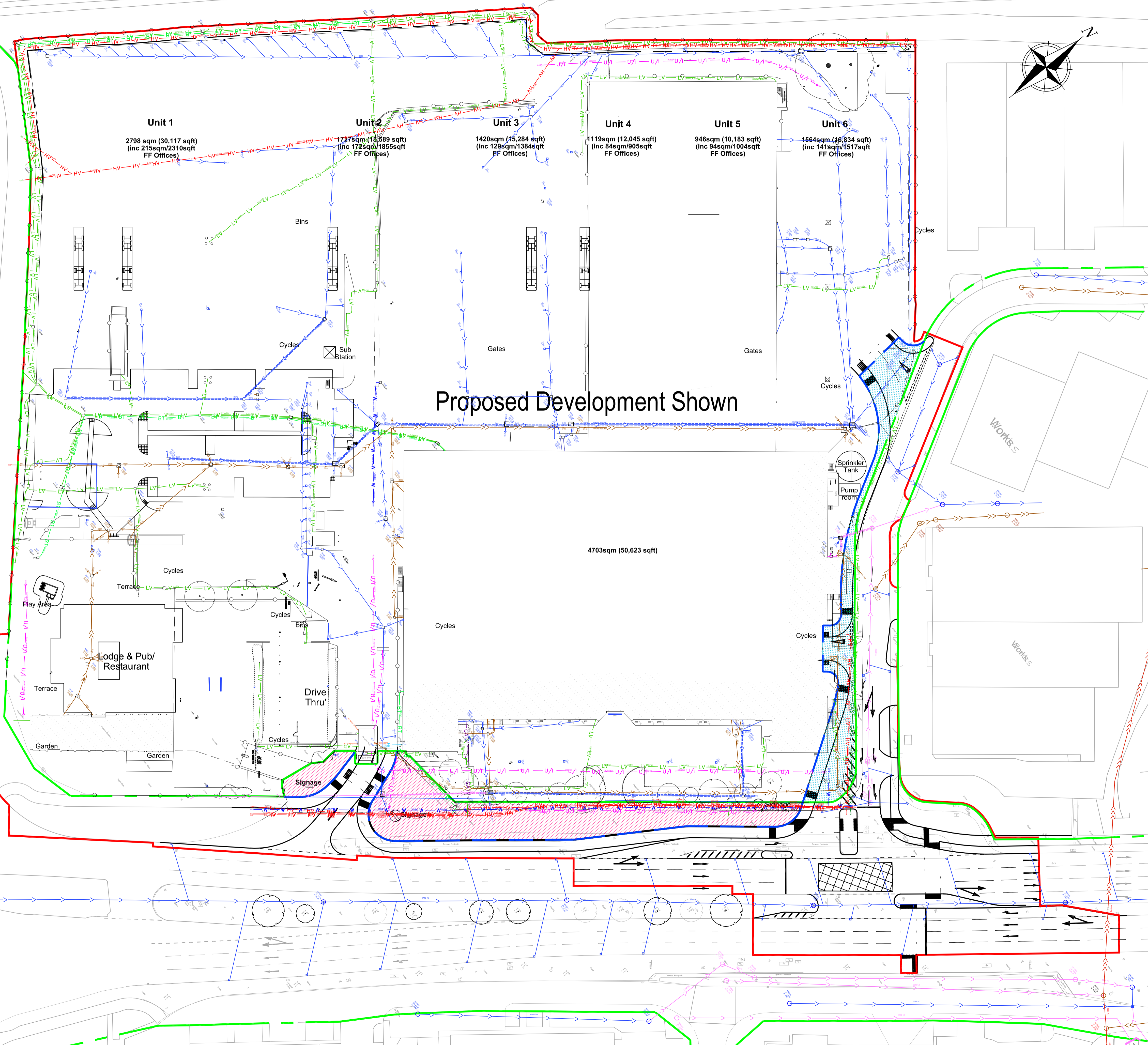
© copyright CDP Ltd

Adopted Highway (within ownership)

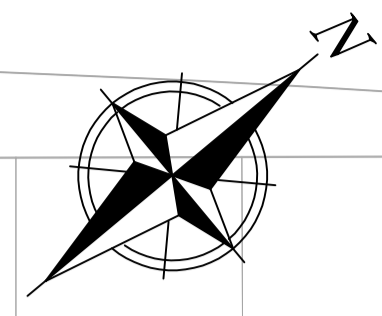
Development Boundary

METZ WAY

Metz Way



Proposed Development Shown



Unit 1
 2798 sqm (30,117 sqft)
 (inc 215sqm/2310sqft FF Offices)

Unit 2
 1727sqm (18,589 sqft)
 (inc 172sqm/1855sqft FF Offices)

Unit 3
 1420sqm (15,284 sqft)
 (inc 129sqm/1384sqft FF Offices)

Unit 4
 119sqm (12,045 sqft)
 (inc 84sqm/905sqft FF Offices)

Unit 5
 946sqm (10,183 sqft)
 (inc 94sqm/1004sqft FF Offices)

Unit 6
 1564sqm (16,934 sqft)
 (inc 141sqm/1517sqft FF Offices)

4703sqm (50,623 sqft)

Lodge & Pub/
 Restaurant

Drive Thru

Signage

Sprinkler Tank
 Pump room

WORKS

WORKS

Garden

Garden

Signage

Signage

Signage

Signage

Signage

Signage

Signage

Signage

Signage

Signage

Signage

Signage

Signage

Signage

Signage

Signage



Disclaimer:
Information Subject to Measured Survey

- Notes:
- KEY**
- PLANNING APPLICATION SITE BOUNDARY (Approx 53,142 m² / 13.13 acres)
 - RELEVANT ADOPTED HIGHWAY LAND AND BOUNDARY (WITHIN OWNERSHIP)
 - VISIBILITY SPLAY EASEMENT
 - RELEVANT BOUNDARY UNDER S247/248 (TBC)

AREA SCHEDULE (GIA)

UNIT (GIA)	Area
UNIT 1 (GIA)	70,200 ft ²
Warehouse (incl. office Undercroft)	64,600 ft ²
Office (FF Only)	2,700 ft ²
Office (SF Only)	2,900 ft ²
Car parking spaces	44
UNIT 2 (GIA)	93,530 ft ²
Warehouse (incl. office Undercroft)	86,450 ft ²
Office (FF Only)	3,430 ft ²
Office (SF Only)	3,650 ft ²
Car parking spaces	77
UNIT 3 (GIA)	40,150 ft ²
Warehouse (incl. office Undercroft)	36,375 ft ²
Office (FF Only)	3,775 ft ²
Car parking spaces	31
UNIT 4 (GIA)	6,100 ft ²
Warehouse (incl. office Undercroft)	5,050 ft ²
Office (FF Only)	1,050 ft ²
Car parking spaces	6
UNIT 5 (GIA)	5,170 ft ²
Warehouse (incl. office Undercroft)	4,330 ft ²
Office (FF Only)	840 ft ²
Car parking spaces	5
UNIT 6 (GIA)	3,660 ft ²
Warehouse (incl. office Undercroft)	3,160 ft ²
Office (FF Only)	500 ft ²
Car parking spaces	3
UNIT 7 (GIA)	4,620 ft ²
Warehouse (incl. office Undercroft)	3,900 ft ²
Office (FF Only)	720 ft ²
Car parking spaces	4
UNIT 8 (GIA)	6,290 ft ²
Warehouse (incl. office Undercroft)	5,195 ft ²
Office (FF Only)	1,095 ft ²
Car parking spaces	6
UNIT 9 (GIA)	2,875 ft ²
Warehouse (incl. office Undercroft)	2,875 ft ²
Car parking spaces	3
UNIT 10 (GIA)	3,915 ft ²
Warehouse (incl. office Undercroft)	3,915 ft ²
Car parking spaces	3
UNIT 11 (GIA)	3,925 ft ²
Warehouse (incl. office Undercroft)	3,925 ft ²
Car parking spaces	3
UNIT 12 (GIA)	3,925 ft ²
Warehouse (incl. office Undercroft)	3,925 ft ²
Car parking spaces	3
UNIT 13 (GIA)	3,915 ft ²
Warehouse (incl. office Undercroft)	3,915 ft ²
Car parking spaces	3
UNIT 14 (GIA)	2,875 ft ²
Warehouse (incl. office Undercroft)	2,875 ft ²
Car parking spaces	3
TOTAL GIA	251,150 ft²
Total Car Parking	194

07	Number of bicycle spaces rationalized 04.05.22 in line with LPA & BREEM requirements & Landscaping updated	PS	HA
06	Increase to landscaping	03.05.22	HT HA
05	Site layout adjusted to amended levels.	28.03.22	PS MM
04	Amendments to unit cores	12.12.21	HT HA
03	Update U9 to 14	30.11.21	HT HA
02	Unit GA, U1&2 move for trees, U4to8 pavement, Unit 3 pavement	23.11.21	HT HA
01	Update to Unit 2	15.11.21	HT HA
00	Site access updated	15.11.21	HT HA
DR	DR Issue	04.11.21	HT HA
Rev:	Notes:	Date:	Dwn: Iss:

Suitability Code:



hale
ARCHITECTURE
22c Leathermarket Street, London, SE1 3HP

Project:
Access Park, Gloucester

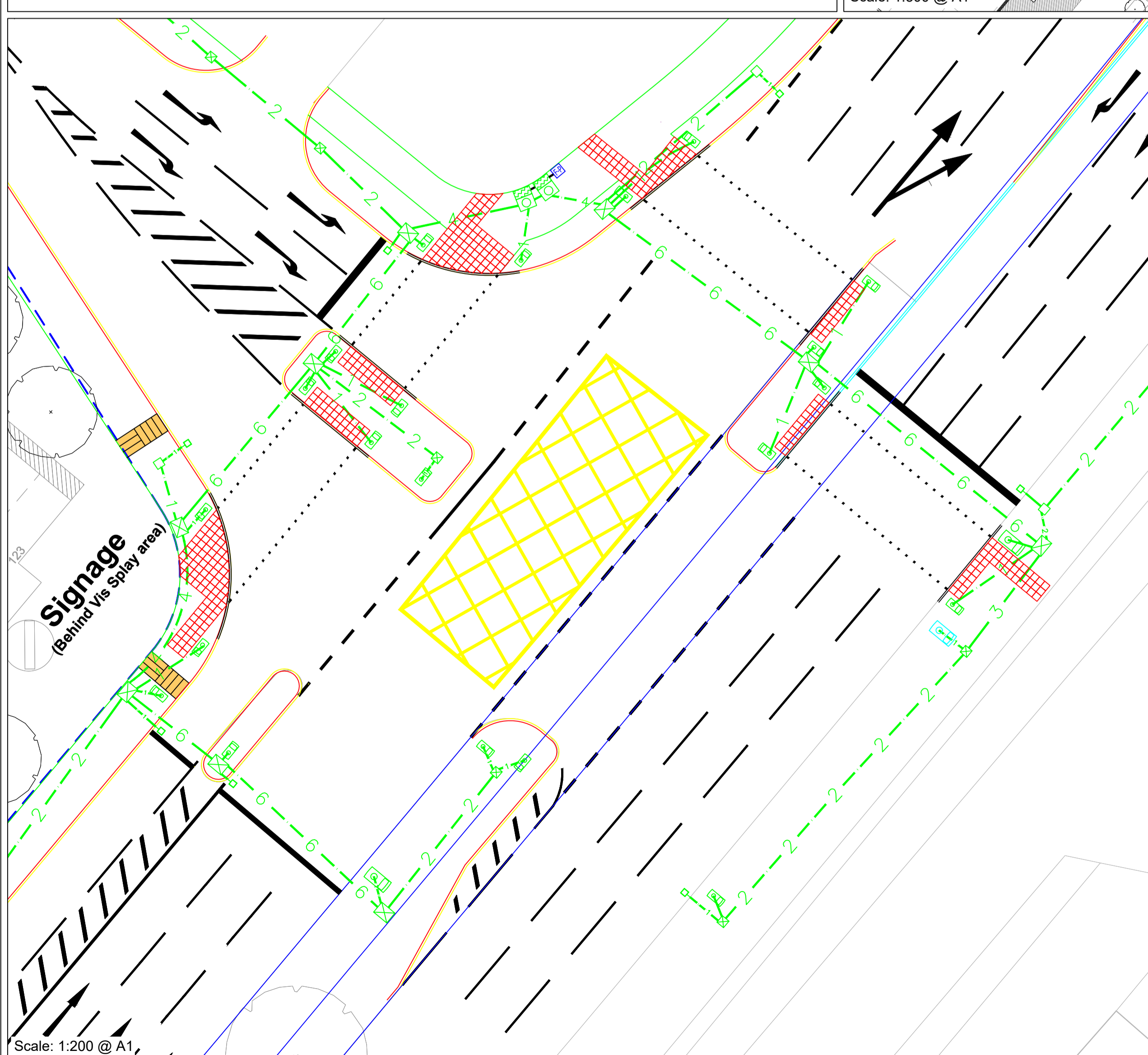
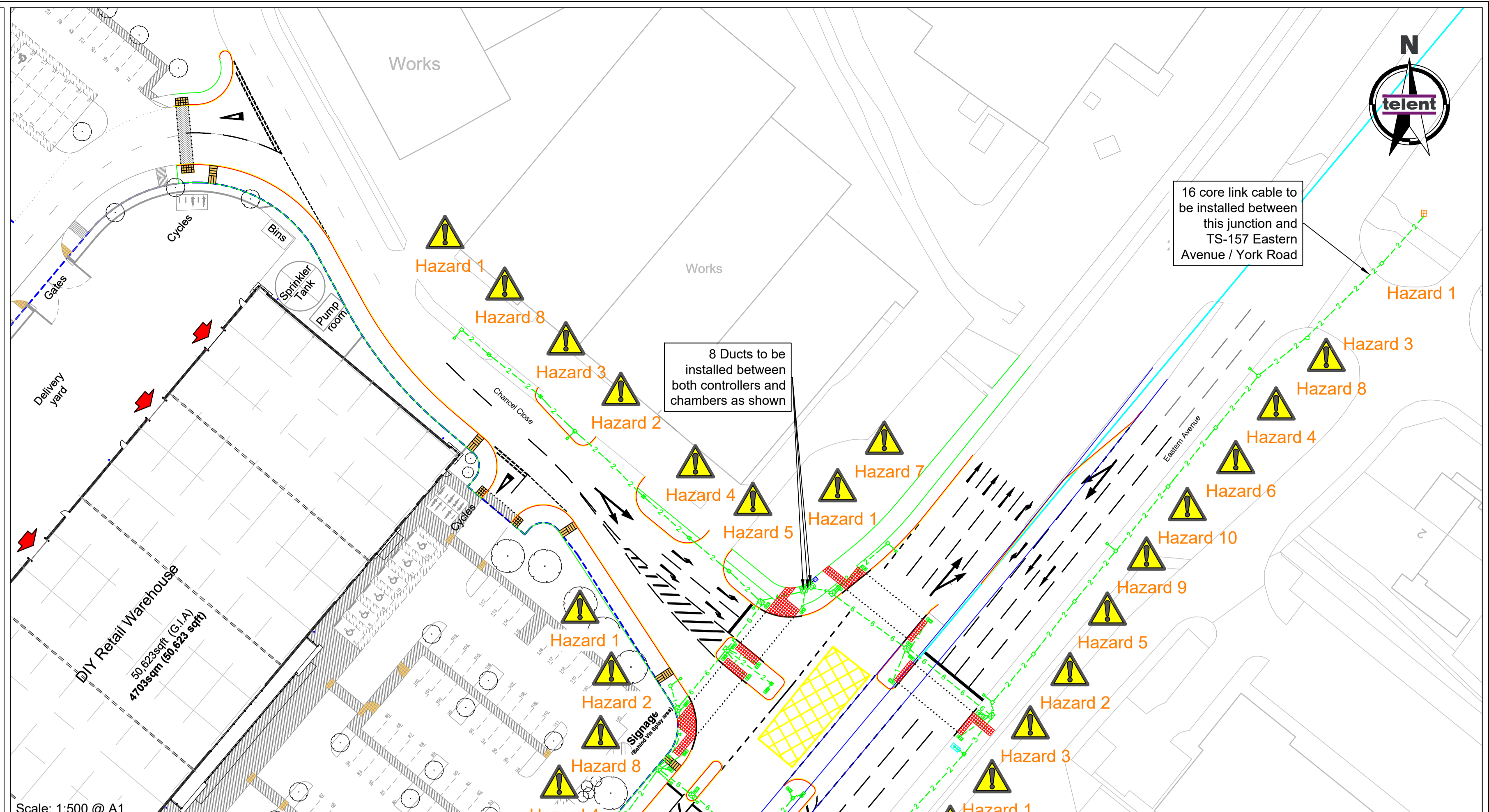
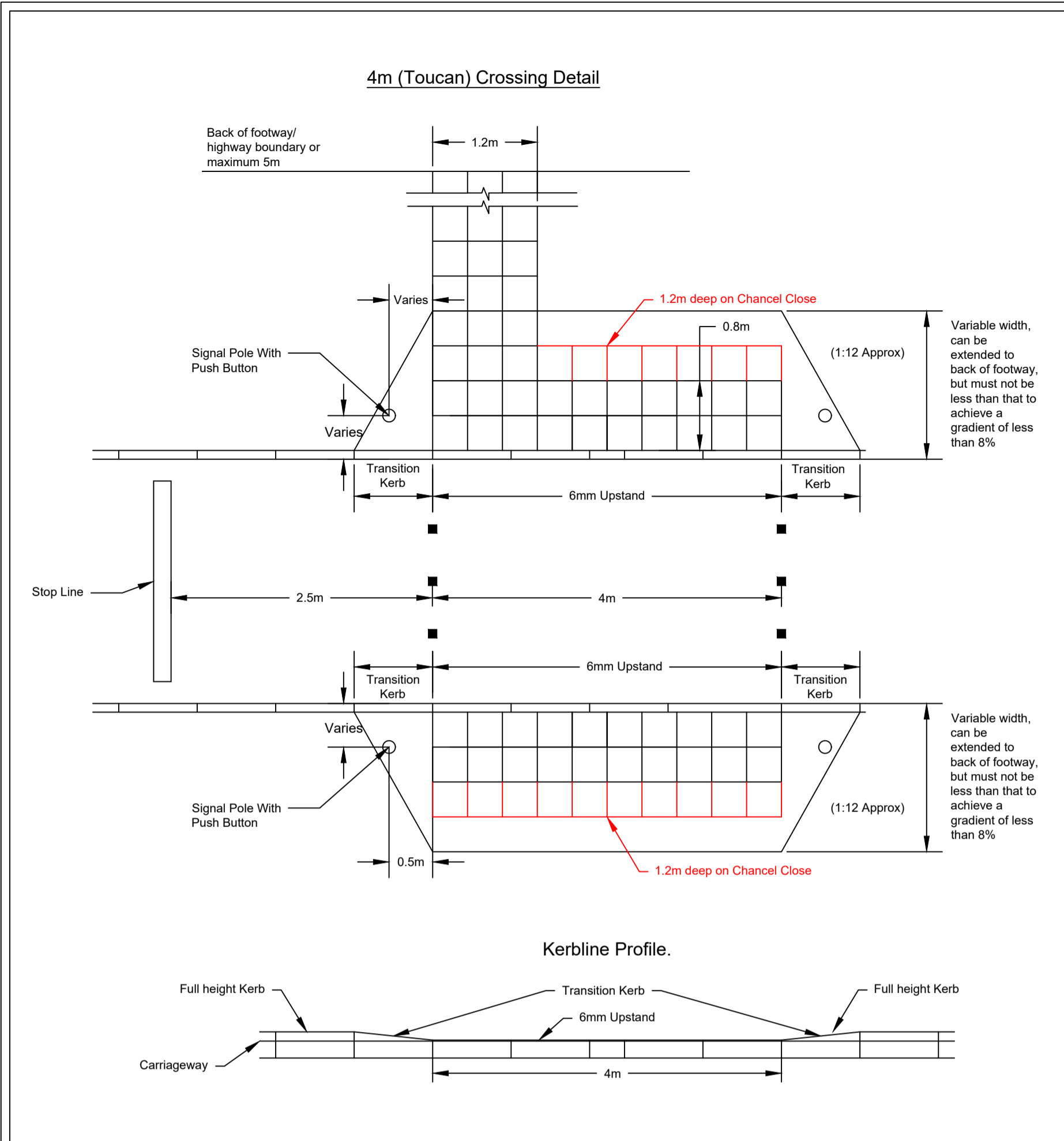
Drawing Title:
Proposed Site Plan

Project No:
21078

Scale @ A1/A3
1:500 / 1:1000

Revision:
07

Drawing No:
21078-PL1003



The following information has been collected from pre-construction information and the telent CDM hazard management process.

Hazards
1. HV underground cables within vicinity of excavation works.
2. LV underground cables within vicinity of excavation works.
3. Gas mains within vicinity of excavation works.
4. Water mains within vicinity of excavation works.
5. Virgin Media cables within vicinity of excavation works.
6. SSE Telecoms cables within vicinity of excavation works.
7. BT chambers and cables within vicinity of excavation works.
8. Street Lighting within vicinity excavation works.
9. Tree roots within vicinity of excavation works.
10. Overgrown trees on approach to junction which need to be regularly maintained to ensure visibility is not affected.

Full Statutory undertakers information has not been provided by the customer. All information has been produced from either the site survey or data requested online.

CIVILS KEY:

- NAL Controller Cabinet Base.
- Electrical Feeder Pillar.
- NAL STAKKAbbox Controller Chamber 900mm x 900mm.
- NAL STAKKAbbox Large Chamber 600mm x 450mm.
- NAL STAKKAbbox Medium Chamber 450mm x 450mm.
- NAL STAKKAbbox Small Chamber 300mm x 450mm.
- NAL Pole Retention Socket RS115.
- Medium NAL Pole Retention Socket RS168.
- Large NAL Pole Retention Socket RS406.
- NAL Carriageway Loop Box with 50mm Connecting Duct.
- New 100mm Orange Traffic Signals Duct (No. as indicated).
- 50mm Orange Duct for Electrical Feed.
- New 400mm x 400mm Tactile Paving (Red in colour).
- Existing Chamber 600mm x 600mm.

- Notes:
- All ducting shall be polypropylene, orange in colour, smooth bore with 'Traffic Signals' imprinted on the duct. Draw cords shall be included in all ducts.
 - All duct chambers are to have a grade B composite lid with steel frames and will have 150mm concrete bed and surround.
 - Ducting from RS115 NAL units to adjacent chamber are to be 1x100mm unless indicated otherwise. All other runs shall be as indicated by number.
 - Orange 50mm duct to be installed between electrical feeder pillar and controller for electricity supply. Main contractor to organise electrical supply for controller.
 - Drawing to be read in conjunction with the works specification.
 - Drawing to be read in conjunction with: 312581 - TS

DETAILED DESIGN

01	19/08/2021	First Issue	LWW/DWK/PJS
Iss/Rev	Date	Description	By / Check/ App

Title: **A38 Eastern Avenue, Access Park, Gloucester Civils Layout**

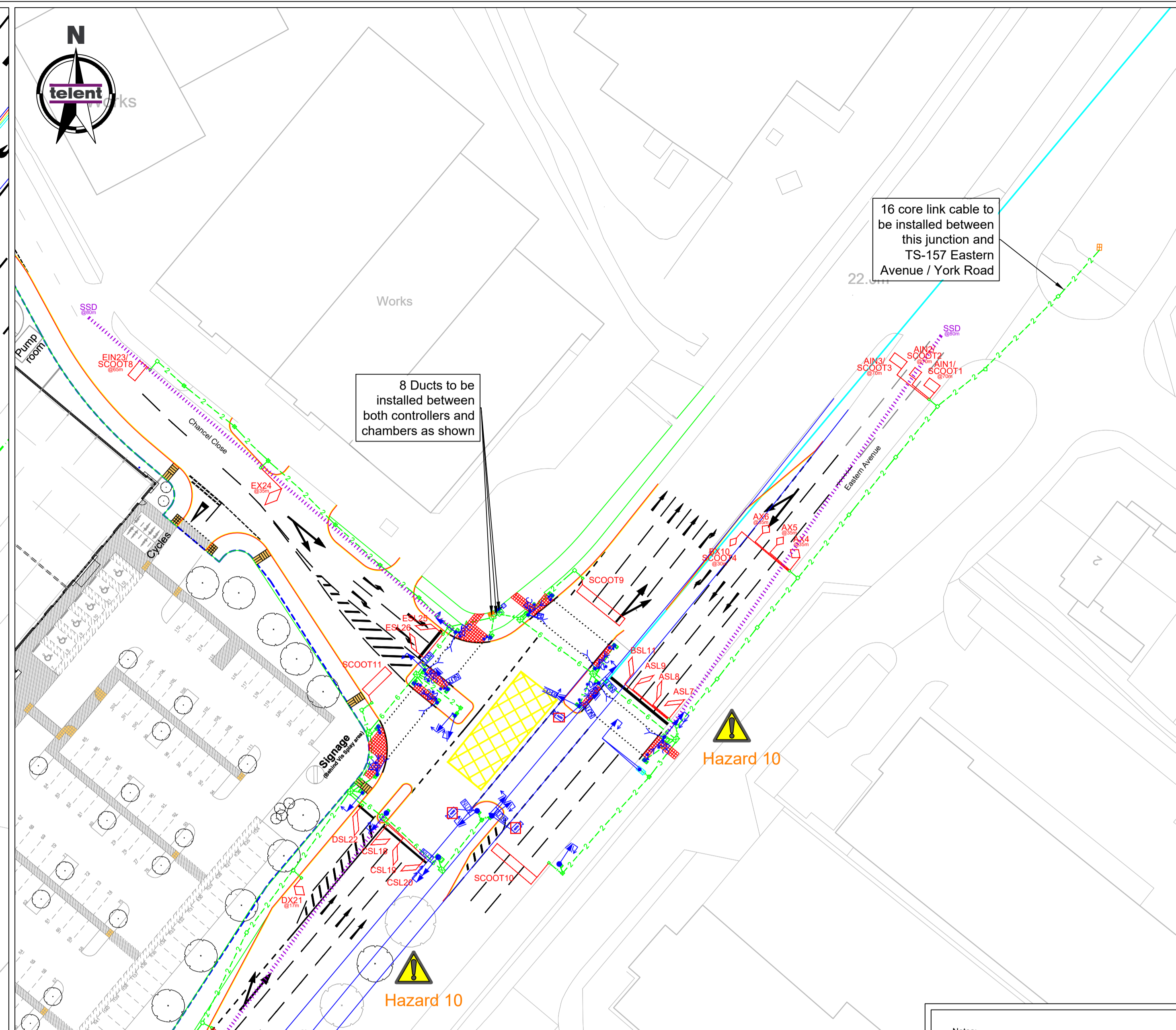
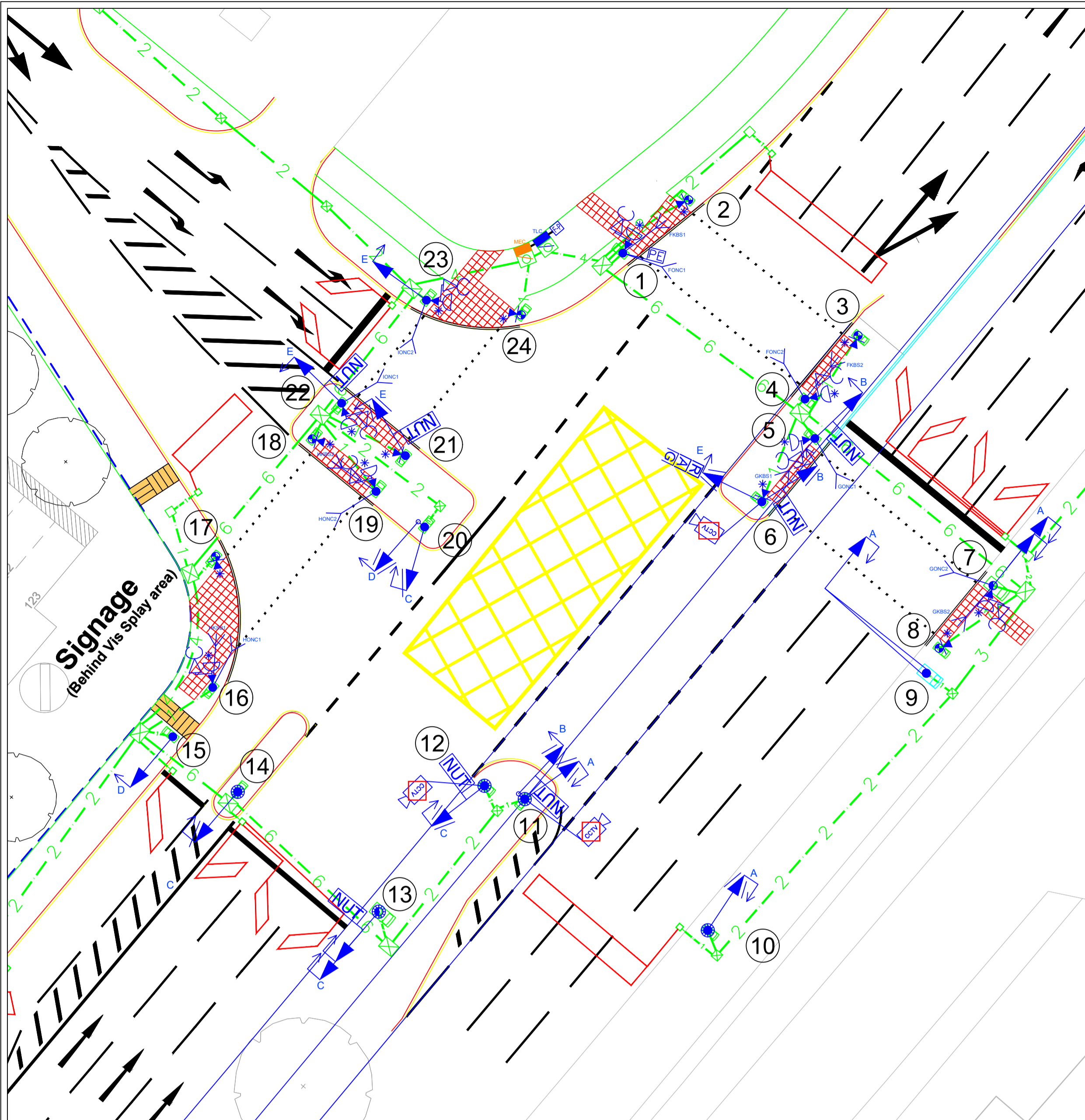
Project No:	Scale:	Date:
S01241	As Shown	19/08/2021
Drawn:	CAD File Name:	
LWW	312581-TS-iss01-Rev00	

telent

Technology Services Ltd.
Point 3, Haywood Road, Warwick, CV34 5AH, United Kingdom

Originator:	Checked:	Approved:	Approval Date:
LWW	DWK	PJS	19/08/2021

DRAWING No: 312581-CV ISS: 01 REV: 00



Hazards	
1. HV underground cables within vicinity of excavation works.	
2. LV underground cables within vicinity of excavation works.	
3. Gas mains within vicinity of excavation works.	
4. Water mains within vicinity of excavation works.	
5. Virgin Media cables within vicinity of excavation works.	
6. SSE Telecoms cables within vicinity of excavation works.	
7. BT chambers and cables within vicinity of excavation works.	
8. Street Lighting within vicinity excavation works.	
9. Tree roots within vicinity of excavation works.	
10. Overgrown trees on approach to junction which need to be regularly maintained to ensure visibility is not affected.	

Full Statutory undertakers information has not been provided by the customer. All information has been produced from either the site survey or data requested online.

SIGNALS KEY:

- Large case telent OPTIMA ELV Traffic Signal Controller Cabinet Base.
- MEC Cabinet Installed on a NAL Controller Cabinet Base.
- Electrical Feeder Pillar.
- 4m Low Access Spigot Signal Pole.
- 4m Passive Safe Signal Pole.
- 2m Slotless Stub Pole.
- 6m Low Access Slotless Signal Pole.
- 6m Passive Safe Signal Pole.
- 8m NAL Rotating Mast Arm.
- RAGA (Right Turn) Primary Signal Head.
- RAGA (Right Turn) Secondary Signal Head.
- RAGA (Left Turn) Primary Signal Head.
- RAGA (Left Turn) Secondary Signal Head.
- RAGA (Ahead) Primary Signal Head.
- RAGA (Ahead) Secondary Signal Head.
- RAGA (Ahead) Side Mounted Tunnel Hood.
- No U Turn Regulatory Bow Sign 4-in-line.
- Tunnel Hoods (Red, Amber & Green Aspects).
- 0.5m Extension Bracket.
- Nearside Toucan Indicator Combined Unit (NFOV).
- Pedestrian Demand Unit.
- Brushless Tactile Device.
- AGD 326 On-Crossing Detector and Label.
- AGD 645 Kerbside Detector and Label.
- Photoelectric Cell.
- Static IP CCTV Camera.
- Signal Pole Number.
- Slopline Detection Loop.
- MOVA Detection Loop and Label.
- SCOOT Detection Loop.
- Dual Purpose MOVA / SCOOT Detection Loop.
- Sloping Site Distance (SSD) Desirable 80m for 40mph.

CIVILS KEY:

- NAL STAKKAbOX Controller Chamber 900mm x 900mm.
- NAL STAKKAbOX Large Chamber 600mm x 450mm.
- NAL STAKKAbOX Medium Chamber 450mm x 450mm.
- NAL STAKKAbOX Small Chamber 300mm x 450mm.
- NAL Pole Retention Socket RS115.
- Medium NAL Pole Retention Socket RS168.
- Large NAL Pole Retention Socket RS406.
- NAL Carriageway Loop Box with 50mm Connecting Duct.
- New 100mm Orange Traffic Signals Duct (No. as indicated).
- 50mm Orange Duct for Electrical Feed.
- New 400mm x 400mm Tactile Paving (Red in colour).
- Existing Chamber 600mm x 600mm.

Scale: 1:200 @ A1


Cable Schematic

TERMINAL	DESCRIPTION	LINK	TERMINAL
AIN1/SCOOT1	AIN2/SCOOT2	AIN3/SCOOT3	3x 2 pair non-armoured
AXA	AX5	AX6	4x 2 pair non-armoured
ASL7	ASL8	ASL9	4x 2 pair non-armoured
CIN12/SCOOT5	CIN13/SCOOT6	CIN14/SCOOT7	3x 2 pair non-armoured
CX15	CX16	CX17	3x 2 pair non-armoured
CSL18	CSL19	CSL20	3x 2 pair non-armoured
DX21	DX22	DX23	1x 2 pair non-armoured
DSL24	DSL25	DSL26	1x 2 pair non-armoured
EIN23/SCOOT8	EIN24/SCOOT9	EIN25/SCOOT10	1x 2 pair non-armoured
ESL29	ESL30	ESL31	1x 2 pair non-armoured
SCOOT9	SCOOT10	SCOOT11	1x 2 pair non-armoured
SCOOT11	SCOOT12	SCOOT13	1x 2 pair non-armoured
SCOOT13	SCOOT14	SCOOT15	1x 2 pair non-armoured
SCOOT15	SCOOT16	SCOOT17	1x 2 pair non-armoured
SCOOT17	SCOOT18	SCOOT19	1x 2 pair non-armoured
SCOOT19	SCOOT20	SCOOT21	1x 2 pair non-armoured
SCOOT21	SCOOT22	SCOOT23	1x 2 pair non-armoured
SCOOT23	SCOOT24	SCOOT25	1x 2 pair non-armoured
SCOOT25	SCOOT26	SCOOT27	1x 2 pair non-armoured
SCOOT27	SCOOT28	SCOOT29	1x 2 pair non-armoured
SCOOT29	SCOOT30	SCOOT31	1x 2 pair non-armoured
SCOOT31	SCOOT32	SCOOT33	1x 2 pair non-armoured
SCOOT33	SCOOT34	SCOOT35	1x 2 pair non-armoured
SCOOT35	SCOOT36	SCOOT37	1x 2 pair non-armoured
SCOOT37	SCOOT38	SCOOT39	1x 2 pair non-armoured
SCOOT39	SCOOT40	SCOOT41	1x 2 pair non-armoured
SCOOT41	SCOOT42	SCOOT43	1x 2 pair non-armoured
SCOOT43	SCOOT44	SCOOT45	1x 2 pair non-armoured
SCOOT45	SCOOT46	SCOOT47	1x 2 pair non-armoured
SCOOT47	SCOOT48	SCOOT49	1x 2 pair non-armoured
SCOOT49	SCOOT50	SCOOT51	1x 2 pair non-armoured
SCOOT51	SCOOT52	SCOOT53	1x 2 pair non-armoured
SCOOT53	SCOOT54	SCOOT55	1x 2 pair non-armoured
SCOOT55	SCOOT56	SCOOT57	1x 2 pair non-armoured
SCOOT57	SCOOT58	SCOOT59	1x 2 pair non-armoured
SCOOT59	SCOOT60	SCOOT61	1x 2 pair non-armoured
SCOOT61	SCOOT62	SCOOT63	1x 2 pair non-armoured
SCOOT63	SCOOT64	SCOOT65	1x 2 pair non-armoured
SCOOT65	SCOOT66	SCOOT67	1x 2 pair non-armoured
SCOOT67	SCOOT68	SCOOT69	1x 2 pair non-armoured
SCOOT69	SCOOT70	SCOOT71	1x 2 pair non-armoured
SCOOT71	SCOOT72	SCOOT73	1x 2 pair non-armoured
SCOOT73	SCOOT74	SCOOT75	1x 2 pair non-armoured
SCOOT75	SCOOT76	SCOOT77	1x 2 pair non-armoured
SCOOT77	SCOOT78	SCOOT79	1x 2 pair non-armoured
SCOOT79	SCOOT80	SCOOT81	1x 2 pair non-armoured
SCOOT81	SCOOT82	SCOOT83	1x 2 pair non-armoured
SCOOT83	SCOOT84	SCOOT85	1x 2 pair non-armoured
SCOOT85	SCOOT86	SCOOT87	1x 2 pair non-armoured
SCOOT87	SCOOT88	SCOOT89	1x 2 pair non-armoured
SCOOT89	SCOOT90	SCOOT91	1x 2 pair non-armoured
SCOOT91	SCOOT92	SCOOT93	1x 2 pair non-armoured
SCOOT93	SCOOT94	SCOOT95	1x 2 pair non-armoured
SCOOT95	SCOOT96	SCOOT97	1x 2 pair non-armoured
SCOOT97	SCOOT98	SCOOT99	1x 2 pair non-armoured
SCOOT99	SCOOT100	SCOOT101	1x 2 pair non-armoured
SCOOT101	SCOOT102	SCOOT103	1x 2 pair non-armoured
SCOOT103	SCOOT104	SCOOT105	1x 2 pair non-armoured
SCOOT105	SCOOT106	SCOOT107	1x 2 pair non-armoured
SCOOT107	SCOOT108	SCOOT109	1x 2 pair non-armoured
SCOOT109	SCOOT110	SCOOT111	1x 2 pair non-armoured
SCOOT111	SCOOT112	SCOOT113	1x 2 pair non-armoured
SCOOT113	SCOOT114	SCOOT115	1x 2 pair non-armoured
SCOOT115	SCOOT116	SCOOT117	1x 2 pair non-armoured
SCOOT117	SCOOT118	SCOOT119	1x 2 pair non-armoured
SCOOT119	SCOOT120	SCOOT121	1x 2 pair non-armoured
SCOOT121	SCOOT122	SCOOT123	1x 2 pair non-armoured
SCOOT123	SCOOT124	SCOOT125	1x 2 pair non-armoured
SCOOT125	SCOOT126	SCOOT127	1x 2 pair non-armoured
SCOOT127	SCOOT128	SCOOT129	1x 2 pair non-armoured
SCOOT129	SCOOT130	SCOOT131	1x 2 pair non-armoured
SCOOT131	SCOOT132	SCOOT133	1x 2 pair non-armoured
SCOOT133	SCOOT134	SCOOT135	1x 2 pair non-armoured
SCOOT135	SCOOT136	SCOOT137	1x 2 pair non-armoured
SCOOT137	SCOOT138	SCOOT139	1x 2 pair non-armoured
SCOOT139	SCOOT140	SCOOT141	1x 2 pair non-armoured
SCOOT141	SCOOT142	SCOOT143	1x 2 pair non-armoured
SCOOT143	SCOOT144	SCOOT145	1x 2 pair non-armoured
SCOOT145	SCOOT146	SCOOT147	1x 2 pair non-armoured
SCOOT147	SCOOT148	SCOOT149	1x 2 pair non-armoured
SCOOT149	SCOOT150	SCOOT151	1x 2 pair non-armoured
SCOOT151	SCOOT152	SCOOT153	1x 2 pair non-armoured
SCOOT153	SCOOT154	SCOOT155	1x 2 pair non-armoured
SCOOT155	SCOOT156	SCOOT157	1x 2 pair non-armoured
SCOOT157	SCOOT158	SCOOT159	1x 2 pair non-armoured
SCOOT159	SCOOT160	SCOOT161	1x 2 pair non-armoured
SCOOT161	SCOOT162	SCOOT163	1x 2 pair non-armoured
SCOOT163	SCOOT164	SCOOT165	1x 2 pair non-armoured
SCOOT165	SCOOT166	SCOOT167	1x 2 pair non-armoured
SCOOT167	SCOOT168	SCOOT169	1x 2 pair non-armoured
SCOOT169	SCOOT170	SCOOT171	1x 2 pair non-armoured
SCOOT171	SCOOT172	SCOOT173	1x 2 pair non-armoured
SCOOT173	SCOOT174	SCOOT175	1x 2 pair non-armoured
SCOOT175	SCOOT176	SCOOT177	1x 2 pair non-armoured
SCOOT177	SCOOT178	SCOOT179	1x 2 pair non-armoured
SCOOT179	SCOOT180	SCOOT181	1x 2 pair non-armoured
SCOOT181	SCOOT182	SCOOT183	1x 2 pair non-armoured
SCOOT183	SCOOT184	SCOOT185	1x 2 pair non-armoured
SCOOT185	SCOOT186	SCOOT187	1x 2 pair non-armoured
SCOOT187	SCOOT188	SCOOT189	1x 2 pair non-armoured
SCOOT189	SCOOT190	SCOOT191	1x 2 pair non-armoured
SCOOT191	SCOOT192	SCOOT193	1x 2 pair non-armoured
SCOOT193	SCOOT194	SCOOT195	1x 2 pair non-armoured
SCOOT195	SCOOT196	SCOOT197	1x 2 pair non-armoured
SCOOT197	SCOOT198	SCOOT199	1x 2 pair non-armoured
SCOOT199	SCOOT200	SCOOT201	1x 2 pair non-armoured
SCOOT201	SCOOT202	SCOOT203	1x 2 pair non-armoured
SCOOT203	SCOOT204	SCOOT205	1x 2 pair non-armoured
SCOOT205	SCOOT206	SCOOT207	1x 2 pair non-armoured
SCOOT207	SCOOT208	SCOOT209	1x 2 pair non-armoured
SCOOT209	SCOOT210	SCOOT211	1x 2 pair non-armoured
SCOOT211	SCOOT212	SCOOT213	1x 2 pair non-armoured
SCOOT213	SCOOT214	SCOOT215	1x 2 pair non-armoured
SCOOT215	SCOOT216	SCOOT217	1x 2 pair non-armoured
SCOOT217	SCOOT218	SCOOT219	1x 2 pair non-armoured
SCOOT219	SCOOT220	SCOOT221	1x 2 pair non-armoured
SCOOT221	SCOOT222	SCOOT223	1x 2 pair non-armoured
SCOOT223	SCOOT224	SCOOT225	1x 2 pair non-armoured
SCOOT225	SCOOT226	SCOOT227	1x 2 pair non-armoured
SCOOT227	SCOOT228	SCOOT229	1x 2 pair non-armoured
SCOOT229	SCOOT230	SCOOT231	1x 2 pair non-armoured
SCOOT231	SCOOT232	SCOOT233	1x 2 pair non-armoured
SCOOT233	SCOOT234	SCOOT235	1x 2 pair non-armoured
SCOOT235	SCOOT236	SCOOT237	1x 2 pair non-armoured
SCOOT237	SCOOT238	SCOOT239	1x 2 pair non-armoured
SCOOT239	SCOOT240	SCOOT241	1x 2 pair non-armoured
SCOOT241	SCOOT242	SCOOT243	1x 2 pair non-armoured
SCOOT243	SCOOT244	SCOOT245	1x 2 pair non-armoured
SCOOT245	SCOOT246	SCOOT247	1x 2 pair non-armoured
SCOOT247	SCOOT248	SCOOT249	1x 2 pair non-armoured
SCOOT249	SCOOT250	SCOOT251	1x 2 pair non-armoured
SCOOT251	SCOOT252	SCOOT253	1x 2 pair non-armoured
SCOOT253	SCOOT254	SCOOT255	1x 2 pair non-armoured
SCOOT255	SCOOT256	SCOOT257	1x 2 pair non-armoured
SCOOT257	SCOOT258	SCOOT259	1x 2 pair non-armoured
SCOOT259	SCOOT260	SCOOT261	1x 2 pair non-armoured
SCOOT261	SCOOT262	SCOOT263	1x 2 pair non-armoured
SCOOT263	SCOOT264	SCOOT265	1x 2 pair non-armoured
SCOOT265	SCOOT266	SCOOT267	1x 2 pair non-armoured
SCOOT267	SCOOT268	SCOOT269	1x 2 pair non-armoured
SCOOT269	SCOOT270	SCOOT271	1x 2 pair non-armoured
SCOOT271	SCOOT272	SCOOT273	1x 2 pair non-armoured
SCOOT273	SCOOT274	SCOOT275	1x 2 pair non-armoured
SCOOT275	SCOOT276	SCOOT277	1x 2 pair non-armoured
SCOOT277	SCOOT278	SCOOT279	1x 2 pair non-armoured
SCOOT279	SCOOT280	SCOOT281	1x 2 pair non-armoured
SCOOT281	SCOOT282	SCOOT283	1x 2 pair non-armoured
SCOOT283	SCOOT284	SCOOT285	1x 2 pair non-armoured
SCOOT285	SCOOT286	SCOOT287	1x 2 pair non-armoured
SCOOT287	SCOOT288	SCOOT289	1x 2 pair non-armoured
SCOOT289	SCOOT290	SCOOT291	1x 2 pair non-armoured
SCOOT291	SCOOT292	SCOOT293	1x 2 pair non-armoured
SCOOT293	SCOOT294	SCOOT295	1x 2 pair non-armoured
SCOOT295	SCOOT296	SCOOT297	1x 2 pair non-armoured
SCOOT297	SCOOT298	SCOOT299	1x 2 pair non-armoured
SCOOT299	SCOOT300	SCOOT301	1x 2 pair non-armoured
SCOOT301	SCOOT302	SCOOT303	1x 2 pair non-armoured
SCOOT303	SCOOT304	SCOOT305	1x 2 pair non-armoured
SCOOT305	SCOOT306	SCOOT307	1x 2 pair non-armoured
SCOOT307	SCOOT308	SCOOT309	1x 2 pair non-armoured
SCOOT309	SCOOT310	SCOOT311	1x 2 pair non-armoured
SCOOT311	SCOOT312	SCOOT313	1x 2 pair non-armoured
SCOOT313	SCOOT314	SCOOT315	1x 2 pair non-armoured
SCOOT315	SCOOT316	SCOOT317	1x 2 pair non-armoured
SCOOT317	SCOOT318	SCOOT319	1x 2 pair non-armoured
SCOOT319	SCOOT320	SCOOT321	1x 2 pair non-armoured
SCOOT321	SCOOT322	SCOOT323	1x 2 pair non-armoured
SCOOT323	SCOOT324	SCOOT325	1x 2 pair non-armoured
SCOOT325	SCOOT326	SCOOT327	1x 2 pair non-armoured
SCOOT327	SCOOT328	SCOOT329	1x 2 pair non-armoured
SCOOT329	SCOOT330	SCOOT331	1x 2 pair non-armoured
SCOOT331	SCOOT332	SCOOT333	1x 2 pair non-armoured
SCOOT333	SCOOT334	SCOOT335	1x 2 pair non-armoured
SCOOT335	SCOOT336	SCOOT337	1x 2 pair non-armoured
SCOOT337	SCOOT338	SCOOT339	1x 2 pair non-armoured
SCOOT339	SCOOT340	SCOOT341	1x 2 pair non-armoured
SCOOT341	SCOOT342	SCOOT343	1x 2 pair non-armoured
SCOOT343	SCOOT344	SCOOT345	1x 2 pair non-armoured
SCOOT345	SCOOT346	SCOOT347	1x 2 pair non-armoured
SCOOT347	SCOOT348	SCOOT349	1x 2 pair non-armoured
SCOOT349	SCOOT350	SCOOT351	1x 2 pair non-armoured
SCOOT351	SCOOT352	SCOOT353	1x 2 pair non-armoured
SCOOT353	SCOOT354	SCOOT355	1x 2 pair non-armoured
SCOOT355	SCOOT356	SCOOT357	1x 2 pair non-armoured
SCOOT357	SCOOT358	SCOOT359	1x 2 pair non-armoured
SCOOT359	SCOOT360	SCOOT361	1x 2 pair non-armoured
SCOOT361	SCOOT362	SCOOT363	1x 2 pair non-armoured
SCOOT363	SCOOT364	SCOOT365	1x 2 pair non-armoured
SCOOT365	SCOOT366	SCOOT367	1x 2 pair non-armoured
SCOOT367	SCOOT368	SCOOT369	1x 2 pair non-armoured
SCOOT369	SCOOT370	SCOOT371	1x 2 pair non-armoured
SCOOT371	SCOOT372	SCOOT373	1x 2 pair non-armoured
SCOOT373	SCOOT374	SCOOT375	1x 2 pair non-armoured
SCOOT375	SCOOT376	SCOOT377	1x 2 pair non-armoured
SCOOT377	SCOOT378	SCOOT379	1x 2 pair non-armoured
SCOOT379	SCOOT380	SCOOT381	1x 2 pair non-armoured
SCOOT381	SCOOT382	SCOOT383	1x 2 pair non-armoured
SCOOT383	SCOOT384	SCOOT385	1x 2 pair non-armoured
SCOOT385	SCOOT386	SCOOT387	1x 2 pair non-armoured
SCOOT387	SCOOT388	SCOOT389	1x 2 pair non-armoured
SCOOT389	SCOOT390	SCOOT391	1x 2 pair non-armoured
SCOOT391	SCOOT392	SCOOT393	1x 2 pair non-armoured
SCOOT393	SCOOT394	SCOOT395	1x 2 pair non-armoured
SCOOT395	SCOOT396	SCOOT397	1x 2 pair non-armoured
SCOOT397	SCOOT398	SCOOT399	1x 2 pair non


- Notes:
- Do not scale from this drawing.
 - All dimensions in millimetres unless otherwise noted.
 - All levels relative to Ordnance datum.
 - Overhead statutory undertakers information indicated where present.
 - Prior to the commencement of any works on site, the Contractor shall be responsible for verifying all utilities information as provided on drawings with the utilities C2 response file and the relevant utility (see Appendix 1/16). All services (including manhole and service box covers) shall be marked out on site before works begin by reference to existing service drawings, visual check during daylight, and use of CAT/Genny.
 - The contractor shall undertake the works in accordance with HSE Guidance Note HSG47: Avoiding Danger from Underground Services. Hand excavated inspection pits shall be carried out using insulated hand tools, where underground services may be affected by the works (e.g. anchoring signs into the ground, excavation works etc.). Excavation works shall be carried out following the guidance as set out in HSE publications HSG 185 "Be Safe and Shore" and CIS 8(rev1) "Safety in Excavations". In accordance with CDM Regulation 31, no person shall enter any excavation unless it has been inspected by a competent person who has confirmed that it is safe to enter to carry out works.
 - The Contractor shall note that old service apparatus (pipes, ducts etc) may potentially comprise of Asbestos Containing Materials (ACM).
 - This drawing shall be read in conjunction Drawing No's. P20485-3708-201, P20485-3708-1302 & P20485-3708-1401
 - The location of all road lighting equipment is shown indicatively. The exact locations shall be agreed with the Overseeing Organisation.
 - All existing and proposed pedestrian routes must remain free of all lighting equipment (road lighting columns, chambers etc), unless agreed otherwise with the Overseeing Organisation.
 - Asset ID reference numbers shown this drawing are for design purposes only. The contractor will be provided with final asset ID reference numbers from the Overseeing Authorities. Asset ID reference numbers shall be provided to all road lighting columns in accordance with Gloucestershire County Council's Specification.
 - The Contractor shall ensure all new lighting is fully operational before removing any of the existing lighting.
 - Minor vegetation clearance and pruning of bushes maybe required at proposed road lighting column locations as instructed by the Overseeing Organisation.
 - All columns to be supplied by the DNO and be fitted with a secondary fused isolator as detailed on Drawing No. P20485-3708-1401
 - After galvanising all lighting columns are to have the paint protection system applied internally and externally at the place of manufacture. GCC's column protection preference is Dacrylate 2 Pack applied in factory, as per table below.

Paint System to be Applied over: GALVANISE TO BS EN ISO 1461				
Details	1st Coat	2nd Coat	3rd Coat	4th Coat
	Internal & External to 250mm Above Ground	Internal to 250mm Above Ground & External Overall	Internal & External to 250mm Above Ground.	External Upper Section to Ground Level & Overlapping 3rd. Coat down to C/Slot
Paint Specification	T WASH	PRIMER	ROOT TREATMENT	EXTERNAL FINISH
	150-23	90-268 (Item 115) Dacrylate Epidac 2Pk Epoxy High Build Aluminium	79-480 Dacrylate Epidac 2 Pk Epoxy Black Glass Reinforcement	200 - Line Dacrylate Dac-Sil 200 POLYSILOXANE FINISH Colour depends on location (Refer to 10.96)

The following hazards apply to all works shown on this drawing



HAZARD H2


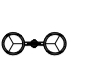






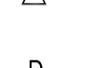



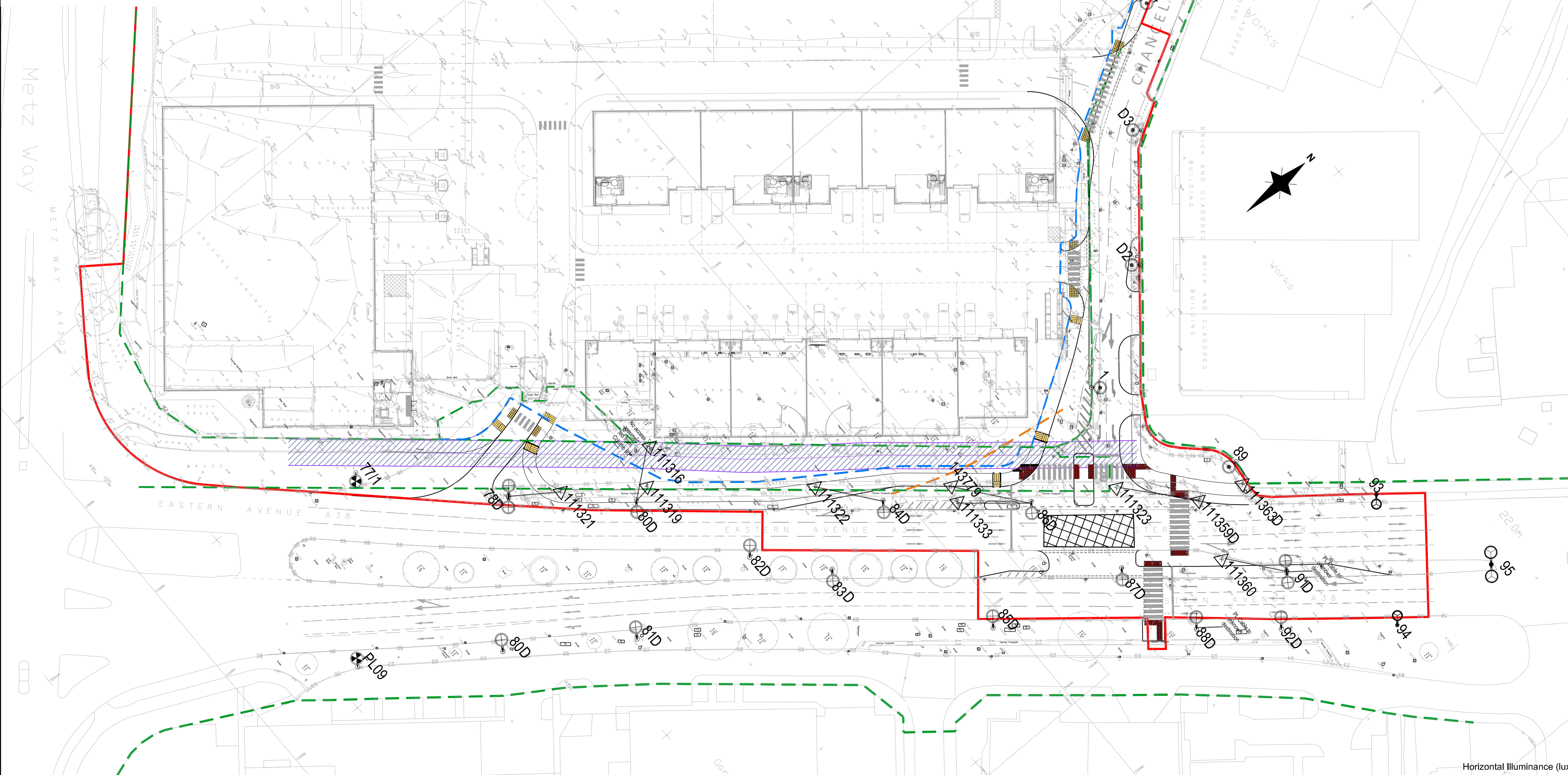
HAZARD H2

SIGNIFICANT SAFETY HAZARDS

Hazard H1 Working close to live traffic.

Hazard H2 Presence of buried services and electricity

- KEY**
-  Existing 10m road lighting column complete with single bracket arm and Urbis Ampera Luminaire to remain
 -  Existing 10m road lighting column complete with twin bracket arm and Urbis Ampera Luminaire to remain
 -  Existing 12m road lighting column complete with single bracket arm and Urbis Ampera Luminaire to remain
 -  Existing 12m road lighting column complete with twin bracket arm and Urbis Ampera Luminaire to remain
 -  Existing 10m or 12m road lighting column complete with twin bracket arm and Urbis Ampera Luminaire to remove
 -  Existing 10m or 12m road lighting column complete with single bracket arm and Urbis Ampera Luminaire to remove
 -  Existing 6m road lighting column complete with single bracket arm and Urbis Ampera Luminaire to remove
 -  Existing road traffic sign to remove
 -  Existing DNO supply to remove
 -  Existing private network cable to remove



All proposed DNO disconnections to be arranged

A	Original Issue	DH	NJ	E-1-2021
Rev.	DESCRIPTION	DRWN	CHK	DATE

DPL LIGHTING

14 Appletree Close | Oakley | Basingstoke | Hampshire | RG23 7HL

CLIENT/CUSTOMER

 COMPLETE DESIGN PARTNERSHIP LTD

PROJECT

ACCESS PARK GLOUCESTER

TITLE

ROAD LIGHTING SITE CLEARANCE

DRAWN	SCALE	DATE
DH	1:500 @ A1	Jan-2021

DRAWING NUMBER	ISSUE
P20485-3708-201	A

DO NOT SCALE FROM THIS DRAWING

© THIS DRAWING IS THE COPYRIGHT OF DPL LIGHTING LTD
It shall not be used or reproduced in any way without their prior written consent