

JUNCTION DETAILS : NEW ACCESS - EX-A38-K LH Side					
Curve	E	N	Level	Radius	
Centre O1:	384955.150	217802.040		20.000	
Start TP1:	384969.590	217788.202	24.226		
End TP2:	384974.799	217805.771	23.553		

JUNCTION DETAILS : NEW ACCESS - EX-A38-K RH Side					
Curve	E	N	Level	Radius	
Centre O2:	384983.878	217808.882	4.000		
Start TP3:	384986.758	217806.107	23.861		
End TP4:	384979.948	217808.137	23.498		

JUNCTION DETAILS : N-CHANCE - EX-A38-K LH Side					
Curve	E	N	Level	Radius	
Centre O1:	385047.789	217930.114	10.000		
Start TP1:	385055.447	217894.682	22.440		
End TP2:	385056.151	217906.598	21.878		

JUNCTION DETAILS : N-CHANCE - EX-A38-K RH Side					
Curve	E	N	Level	Radius	
Centre O2:	385072.931	217928.629	10.000		
Start TP3:	385079.214	217920.849	22.197		
End TP4:	385066.580	217920.904	22.001		

JUNCTION DETAILS : ROAD 1 - N-CHANCE LH Side					
Curve	E	N	Level	Radius	
Centre O1:	385032.779	217930.987	6.000		
Start TP1:	385037.468	217934.730	21.760		
End TP2:	385028.160	217934.817	21.674		

JUNCTION DETAILS : ROAD 1 - N-CHANCE RH Side					
Curve	E	N	Level	Radius	
Centre O2:	385018.819	217943.918	6.000		
Start TP3:	385022.794	217948.413	21.599		
End TP4:	385023.438	217940.088	21.660		

JUNCTION DETAILS : ROAD 2 - N-CHANCE LH Side					
Curve	E	N	Level	Radius	
Centre O1:	385001.889	217947.750	15.000		
Start TP1:	385013.140	217957.670	21.505		
End TP2:	384990.328	217957.308	21.515		

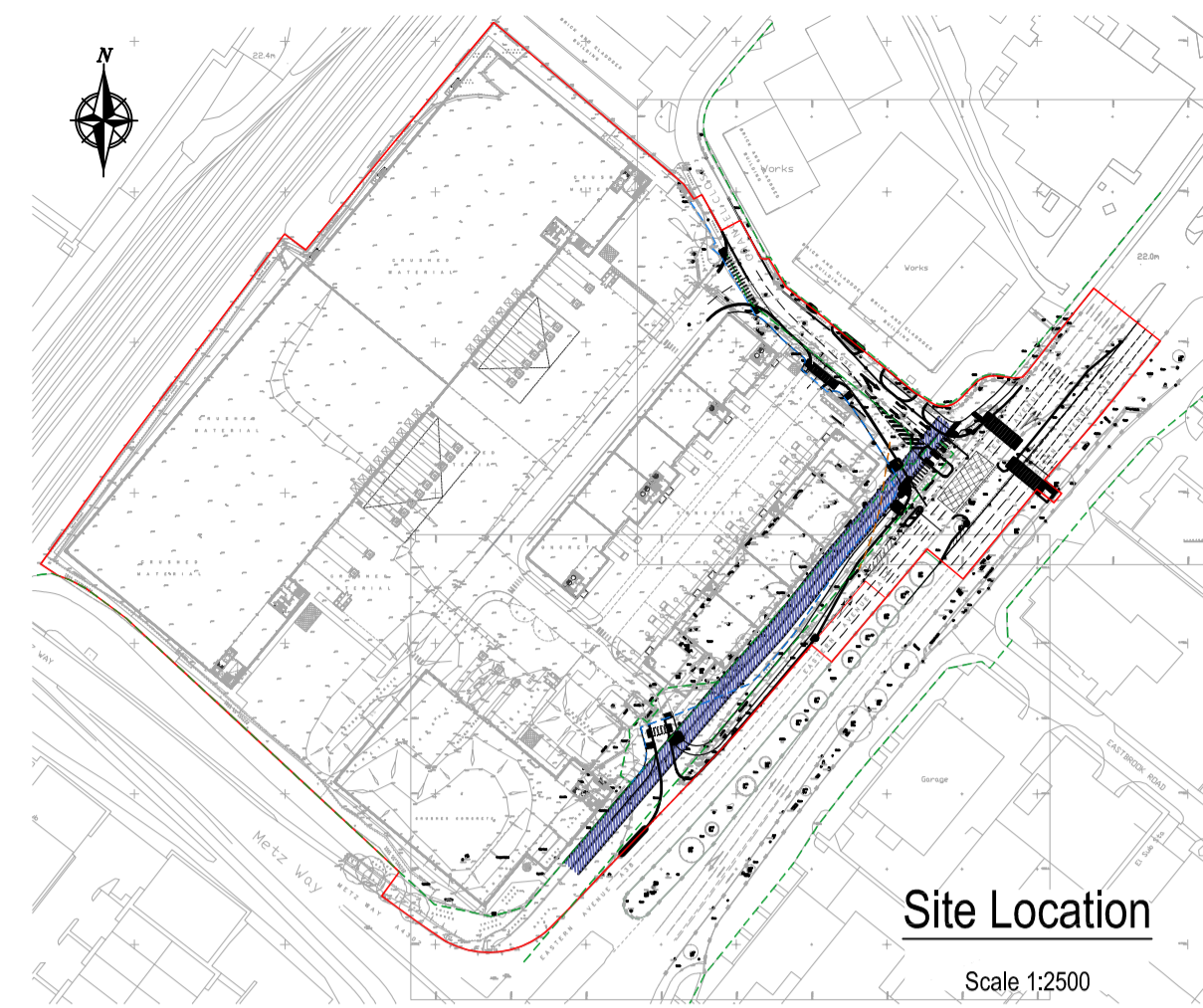
JUNCTION DETAILS : ROAD 2 - N-CHANCE RH Side					
Curve	E	N	Level	Radius	
Centre O2:	384984.824	217980.941	2.000		
Start TP3:	384995.365	217986.675	21.244		
End TP4:	384994.073	217973.295	21.331		

JUNCTION DETAILS : ROAD 3 - N-CHANCE LH Side					
Curve	E	N	Level	Radius	
Centre O1:	385056.320	217934.516	4.000		
Start TP1:	385053.779	217931.427	21.820		
End TP2:	385059.416	217931.984	21.847		

JUNCTION DETAILS : ROAD 3 - N-CHANCE RH Side					
Curve	E	N	Level	Radius	
Centre O2:	385066.030	217926.534	4.000		
Start TP3:	385063.490	217923.444	21.936		
End TP4:	385062.934	217929.068	21.846		

JUNCTION DETAILS : ROAD 4 - N-CHANCE LH Side					
Curve	E	N	Level	Radius	
Centre O1:	385039.493	217948.150	2.000		
Start TP1:	385038.040	217946.776	21.671		
End TP2:	385041.031	217946.871	21.735		

JUNCTION DETAILS : ROAD 4 - N-CHANCE RH Side					
Curve	E	N	Level	Radius	
Centre O2:	385051.932	217938.123	4.000		
Start TP3:	385049.392	217935.033	21.786		
End TP4:	385048.857	217940.681	21.747		



RESIDUAL RISK		REGISTER	
No.	Description of Hazard	Control Measures	Action By
	Standard Construction	Risk Assessment	Contractor
	Works within existing live road carriageway	Risk Assessment	Contractor
	Shallow Services	Risk Assessment	Contractor & Utility Provider

- KEY:
- Site Development Planning Application Site Boundary (Approx 53.142 m² / 13.13 acres)
 - Existing Highways Boundary
 - Proposed Highway Boundary to be Adopted

ALIGNMENT EX-A38-K									
LOCATION	CHAINAGE	EASTING	NORTHING	LEVEL	RADIUS	BEARING	ANGLE	ARC LENGTH	TANL
SPEX-1	0.000	384953.512	217771.424	24.570		43.77973			
TPEX-1a	45.313	384984.863	217804.140	23.897		43.77973			
IPEX-1		384984.868	217804.145		5.000		0.15228	0.013	0.007
TPEX-1b	45.327	384984.873	217804.150	23.897		43.93201			
TPEX-2a	50.847	384988.703	217808.125	23.821		43.93201			
IPEX-2		384988.712	217808.135		5.000		0.31220	0.027	0.014
TPEX-2b	50.874	384988.721	217808.145	23.821		43.61981			
TPEX-3a	56.661	384992.714	217812.334	23.746		43.61981			
IPEX-3		384992.721	217812.342		5.000		0.22879	0.020	0.010
TPEX-3b	56.681	384992.727	217812.349	23.746		43.39103			
TPEX-4a	61.083	384995.752	217815.548	23.687		43.39103			
IPEX-4		384995.784	217815.582		2.000		2.69977	0.094	0.047
TPEX-4b	61.177	384995.815	217815.618	23.686		40.69126			
TPEX-5a	70.445	385001.857	217822.645	23.521		40.69126			
IPEX-5		385001.865	217822.654		2.000		0.70879	0.025	0.012
TPEX-5b	70.469	385001.873	217822.663	23.521		39.98246			
TPEX-6a	139.821	385046.459	217875.784	22.712		39.94232			
IPEX-6		385046.464	217875.790		50.000		0.01896	0.017	0.008
TPEX-6b	139.838	385046.469	217875.796	22.712		39.92336			
TPEX-7a	149.293	385052.537	217883.048	22.644		39.92336			
IPEX-7		385052.541	217883.052		15.000		0.04529	0.012	0.006
TPEX-7b	149.305	385052.545	217883.057	22.644		39.96885			
TPEX-8a	154.371	385055.799	217886.939	22.608		39.96885			
IPEX-8		385056.442	217887.706		5145.544		0.02227	2.000	1.000
TPEX-8b	156.371	385057.084	217888.472	22.594		39.99092			
TPEX-9a	167.422	385064.186	217896.938	22.526		39.99092			
IPEX-9		385065.472	217898.471		2059.898		0.11126	4.000	2.000
TPEX-9b	171.422	385066.754	217900.005	22.503		39.87966			
TPEX-10a	192.319	385080.153	217916.042	22.317		39.87966			
IPEX-10		385080.164	217916.055		25.000		0.07762	0.034	0.017
TPEX-10b	192.353	385080.174	217916.068	22.316		39.95728			
TPEX-11a	202.019	385086.383	217923.478	22.254		39.95728			
IPEX-11		385086.431	217923.535		10.000		0.86215	0.150	0.075
TPEX-11b	202.170	385086.478	217923.594	22.253		39.09513			
TPEX-12a	204.221	385087.772	217925.185	22.242		39.09513			
IPEX-12		385087.813	217925.238		2.000		3.79030	0.130	0.065
TPEX-12b	204.351	385087.851	217925.289	22.242		35.36483			
TPEX-13a	220.014	385096.916	217938.061	22.191		35.36483			
IPEX-13		385097.022	217938.211		5.000		4.20027	0.367	0.183
TPEX-13b	220.380	385097.139	217938.352	22.189		39.58510			
TPEX-14a	228.818	385102.513	217944.857	22.130		39.58510			
IPEX-14		385102.538	217944.887		10.000		0.45193	0.079	0.039
TPEX-14b	228.897	385102.563	217944.918	22.129		39.11317			
TPEX-15a	233.379	385105.391	217948.396	22.095		39.11317			
IPEX-15		385105.408	217948.417		10.000		0.31278	0.055	0.027
TPEX-15b	233.434	385105.425	217948.438	22.095		38.80039			
TPEX-16a	238.470	385108.581	217952.363	22.057		38.80039			
IPEX-16		385109.834	217953.922		1689.502		0.13565	4.000	2.000
TPEX-16b	242.470	385111.084	217955.484	22.032		38.66474			
EPEX-1	247.757	385114.387	217959.612	22.000		38.66474			

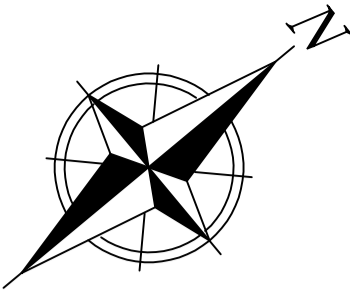
ALIGNMENT NEW ACCESS									
LOCATION	CHAINAGE	EASTING	NORTHING	LEVEL	RADIUS	BEARING	ANGLE	ARC LENGTH	TANL
JPNEWACCE-1	0.000	384979.058	217798.082	23.963		349.24957			
TPNEWACCE-1a	19.303	384975.457	217817.046	23.175		349.24957			
IPNEWACCE-1		384974.815	217820.430		44.450		8.86288	6.876	3.445
TPNEWACCE-1b	26.178	384973.658	217823.675	22.894		340.38669			
EPNEWACCE-1	27.249	384973.299	217824.684	22.850		340.38669			

ALIGNMENT N-CHANCEL									
LOCATION	CHAINAGE	EASTING	NORTHING	LEVEL	RADIUS	BEARING	ANGLE	ARC LENGTH	TANL
JPN-1	0.000	385073.187	217907.704	-999.900		309.45768			
TPN-1a	23.303	385055.195	217922.514	22.020		309.45768			
IPN-1		385046.231	217929.892		112.850		11.74796	23.139	11.610
TPN-1b	46.442	385038.957	217938.941	21.838		321.20564			
IPN-2		385037.180	217941.150		29.500		10.97836	5.652	2.835
TPN-2b	52.094	385035.016	217942.981	21.794		310.22729			
TPN-3a	69.998	385021.347	217954.544	21.653		310.22729			
IPN-3		385012.763	217961.805		60.000		21.22737	22.229	11.244
TPN-3b	92.227	385007.390	217971.682	21.478		331.45466			
EPN-1	138.383	384985.334	218012.227	21.115		331.45466			

ALIGNMENT ROAD 1									
LOCATION	CHAINAGE	EASTING	NORTHING	LEVEL	RADIUS	BEARING	ANGLE	ARC LENGTH	TANL
JP1-1	0.000	385032.294	217945.284	-999.900		219.67151			
EP1-1	11.591	385024.894	217936.362	21.773		219.67151			

ALIGNMENT ROAD 2									
LOCATION	CHAINAGE	EASTING	NORTHING	LEVEL	RADIUS	BEARING	ANGLE	ARC LENGTH	TANL
JP2-1	0.000	385003.455	217978.915	-999.900		219.58048			
EP2-1	30.000	384984.340	217955.793	-999.900		219.58048			

ALIGNMENT ROAD 3									
LOCATION	CHAINAGE	EASTING	NORTHING	LEVEL	RADIUS	BEARING	ANGLE	ARC LENGTH	TANL
JP3-1	0.000	385054.851	217922.798	-999.900		39.29432			
EP3-1	10.763	385061.667							



Notes: DO NOT SCALE DRAWING

Dimensions provided are indicative only, and should be confirmed and read in conjunction with the Architect's construction drawings at such times as they are available, and/or from site measurement. All setting out to be in accordance with the Architect's drawings, any ambiguities to be raised prior to construction.

RESIDUAL RISK REGISTER			
No.	Description of Hazard	Control Measures	Action By
.	Standard construction		

- NOTES:**
- All works to be undertaken in accordance with Gloucestershire County Council Manual for Gloucestershire Streets 3rd Edition & Gloucestershire County Council Highways Standard Drawings.
 - All Statutory Undertakers, including cable television companies, must be contacted prior to commencing any works to ascertain the location and depth of their apparatus. In the event of any protection or diversionary works being necessary to their apparatus then any costs incurred will be the contractors responsibility both for arranging and any payment.
 - The Contractor shall provide, erect and maintain such traffic signs, lamps, barriers and traffic control signals, and such measures may be necessitated by the construction of the works in accordance with the recommendations contained in Chapter 8 of the Traffic Signs Manual.
 - The developer and contractor shall confirm they are working in accordance with NJUG Volume 1 Guidelines on the Positioning and Colour Coding of Underground Utilities Apparatus and Volume 2 Guidelines on the Positioning of Underground Utilities Apparatus for New Development Sites
 - Root barrier to be installed at the back of the adopted footpath to prevent the roots from any proposed new trees undermining the footpath.
 - Retention of the existing kerbline will be subject to inspection and approval by the Local Authority Highways Inspector.
 - Re-use of the existing kerb race will be subject to inspection and approval by the Local Authority Highways Inspector. Reconstruction of the existing channel line to have 300mm overlie of each bluminous layer that is disturbed.
 - 150mm x 50mm back edging kerbs will be laid upturned and flush at footway crossovers.
 - Tacile paving at uncontrolled crossing points to be 400x400mm buff colour blister paving in accordance with DETR guidance on the use of paving surfaces
 - All subgrade structures and unconsolidated material within the construction width of the highway, are to be removed.
 - CBR values and calculations may be required to determine sub-base thickness.
 - Boundary walls will not be adopted.
 - Hinged gully grate and frame to BS EN 124, Grade D400, non-rocking with captive left hand end hinge. Minimum waterway area 900cm squared. Frame depth 100mm. Black coated ductile iron.
 - Any existing gullies that are damaged during construction will be replaced with new ones, as agreed with a representative of the Local Authority Highways department
 - Hand laying of bluminous materials is not permitted on adoptable carriageway.
 - Tarmac road construction to comply with BS EN 130108
 - The provision of a CCTV survey of any highway drainage, at the developers expense, is required prior to laying the wearing course.
 - Where two or more water services boundary boxes are situated together multi-meter boundary as specified by the Sewerage Undertaker are to be installed.
 - A Covenant will be provided to the benefit of the Local Authority ensuring that no planting or structure greater than 600mm in height to be permanently situated within the visibility splay.

SIGNING & SAFETY
 A. The Contractor shall provide, erect and maintain such traffic signs, lamps, barriers and traffic control signals, and such measures may be necessitated by the construction of the works in accordance with the recommendations contained in Chapter 8 of the Traffic Signs Manual.

SERVICES
 B. All Statutory Undertakers, including cable television companies, must be contacted prior to commencing any works to ascertain the location and depth of their apparatus. In the event of any protection or diversionary works being necessary to their apparatus then any costs incurred will be the contractors responsibility both for arranging and any payment.

KEY:
 ——— Site Development Planning Application Site Boundary (Approx 53,142 m² / 13.13 acres)
 - - - - - Existing Highway Boundary

The topographical information shown is based on the topographical survey by Ellam Surveys, Dwg no. 8362_2D11, dated Nov21

FOR APPROVAL

P2	SH	Base layout updated and client comments incorporated	09.08.22
P1	SH	Preliminary Issue	29.04.22
Rev	By	Details	Date
(P=Preliminary, T=Tender, C=Construction, R=Record)			

Client:

Project: Access Park, Gloucester

Drawing Title: Section 278 Works Existing Site Plan

CONSULTING CIVIL & STRUCTURAL ENGINEERS
 CHARFORD LODGE
 ROCK HILL
 BROMSGROVE
 WORCS B61 7JH

COMPLETE DESIGN PARTNERSHIP LTD

Date: Apr 22	Drawing No. 17-7295-0100	Issue Rev. P 2
Scale: As Shown @ A1		
Drawn: SH		
Chkd: JB		

© copyright CDP Ltd

Highway (within ownership)

Component Boundary

METZ WAY

Metz Way

METZ WAY A4303

EASTERN AVENUE A38

Existing Site Plan

Scale 1:500

BRICK AND CLADDED BUILDING

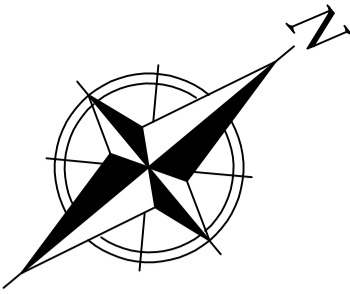
BRICK AND CLADDED BUILDING WORKS

BRICK AND CLADDED BUILDING WORKS

CHAN

CHANCEL CLOSE

Works



Utilities Survey Key

*Survey Information provided by 'Terra Measurement' underground services scan, drawing ref 3528_ACCESS PARK UTILS (A4-L1), dated 18.11.21

*Utilities Search by 'Severn Trent Water' water mains record, dated 06.02.17

BT	BT	BT	BT
CATV	CATV	CATV	CATV
COM	COM	COM	COM
COMsPower	COMsPower	COMsPower	COMsPower
TS	TS	TS	TS
E	E	E	E
LV	LV	LV	LV
HV	HV	HV	HV
GAS	GAS	GAS	GAS
?	?	?	?
BT Cable	BT Cable	BT Cable	BT Cable
CATV Cable	CATV Cable	CATV Cable	CATV Cable
Coms Cable	Coms Cable	Coms Cable	Coms Cable
ComsPower	ComsPower	ComsPower	ComsPower
Traffic Signal Cable	Traffic Signal Cable	Traffic Signal Cable	Traffic Signal Cable
Electric Cable	Electric Cable	Electric Cable	Electric Cable
Electric LV Cable	Electric LV Cable	Electric LV Cable	Electric LV Cable
Gas Pipe	Gas Pipe	Gas Pipe	Gas Pipe
Underlaid Service	Underlaid Service	Underlaid Service	Underlaid Service
Foul Sewer	Foul Sewer	Foul Sewer	Foul Sewer
Combined Sewer	Combined Sewer	Combined Sewer	Combined Sewer
Private Sewer	Private Sewer	Private Sewer	Private Sewer
Pumped Sewer	Pumped Sewer	Pumped Sewer	Pumped Sewer
Rising Main	Rising Main	Rising Main	Rising Main
Trade Effluent	Trade Effluent	Trade Effluent	Trade Effluent
GPR Anomaly	GPR Anomaly	GPR Anomaly	GPR Anomaly
Service Duct	Service Duct	Service Duct	Service Duct
Survey Extents	Survey Extents	Survey Extents	Survey Extents
Chamber Extents	Chamber Extents	Chamber Extents	Chamber Extents
Fibre Optic	Fibre Optic	Fibre Optic	Fibre Optic
CCTV Cables	CCTV Cables	CCTV Cables	CCTV Cables

Notes: DO NOT SCALE DRAWING

Dimensions provided are indicative only, and should be confirmed and read in conjunction with the Architect's construction drawings at such times as they are available, and/or from site measurement.

All setting out to be in accordance with the Architect's drawings, any ambiguities to be raised prior to construction.

RESIDUAL RISK REGISTER			
No.	Description of Hazard	Control Measures	Action By
	Standard construction		

- NOTES:**
- All works to be undertaken in accordance with Gloucestershire County Council Manual for Gloucestershire Streets 3rd Edition & Gloucestershire County Council Highways Standard Drawings.
 - All Statutory Undertakers, including cable television companies, must be contacted prior to commencing any works to ascertain the location and depth of their apparatus. In the event of any protection or diversionary works being necessary to their apparatus then any costs incurred will be the contractors responsibility both for arranging and any payment.
 - The Contractor shall provide, erect and maintain such traffic signs, lamps, barriers and traffic control signals, and such measures may be necessitated by the construction of the works in accordance with the recommendations contained in Chapter 8 of the Traffic Signs Manual.
 - The developer and contractor shall confirm they are working in accordance with NJUG Volume 1 Guidelines on the Positioning and Colour Coding of Underground Utilities' Apparatus and Volume 2 Guidelines on the Positioning of Underground Utilities Apparatus for New Development Sites.
 - Root barrier to be installed at the back of the adopted footpath to prevent the roots from any proposed new trees undermining the footpath.
 - Retention of the existing kerb line will be subject to inspection and approval by the Local Authority Highways inspector.
 - Re-use of the existing kerb race will be subject to inspection and approval by the Local Authority Highways inspector. Reconstruction of the existing channel line to have 300mm overlap of each bituminous layer that is disturbed.
 - 150mm x 50mm back edging kerbs will be laid upturned and flush at footway crossovers.
 - Tacile paving at uncontrolled crossing points to be 400x400mm buff colour blister paving in accordance with 'DETR' guidance on the use of paving surfaces.
 - All subgrade structures and unconsolidated material within the construction width of the highway, are to be removed.
 - CBR values and calculations may be required to determine sub-base thickness.
 - Boundary walls will not be adopted.
 - Hinged gully grate and frame to BS EN 124, Grade D400, non-rocking with captive left hand end hinge. Minimum waterway area 900cm squared. Frame depth 100mm. Black coated ductile iron.
 - Any existing gullies that are damaged during construction will be replaced with new ones, as agreed with a representative of the Local Authority Highways department.
 - Hand laying of bituminous materials is not permitted on adoptable carriageway.
 - Tarmac road construction to comply with BS EN 130108.
 - The provision of a CCTV survey of any highway drainage, at the developers expense, is required prior to laying the wearing course.
 - Where two or more water services boundary boxes are situated together multi-meter boundary as specified by the Sewerage Undertaker are to be installed.
 - A covenant will be provided to the benefit of the Local Authority ensuring that no planting or structure greater than 600mm in height to be permanently sited within the visibility splay.

1.00	Depth (m)	DOC	Depth Of Slab Cover
UTT	Unable To Trace	P.T	Poor Trace
EOI	End of Trace / Signal Lost	N.V.P	No Visible Pipe
EOS	End of Service	N.V.V	No Visible Valve
AR	Assumed Route	E.D	Empty Duct
TR	Taken From Records	RWP	Rain Water Pipe
UTL	Unable To Lift	BLKD	Blocked
UTM	Unable To Measure	M.U.D	Multiple Ducts
M.A.R	Man Access Required	M.U.C	Multiple Cables
CL	Cover Level	CR	Cable Rise
I	Invert Level	AG	Above Ground
UIS	Underside/Suffit	DC	Drainage Channel

NOTES

CENTER LINE OF SERVICES SHOWN.

A REASONABLE SAFETY ZONE SHOULD BE ALLOWED AROUND EACH CENTER LINE OF THE SERVICES SHOWN.

MULTIPLE SERVICES OR LARGER SERVICES ARE SHOWN HATCHED. EXAMPLE:

DRAIN LINES HAVE BEEN SHOWN WHERE POSSIBLE. NOT ALL CONNECTIONS HAVE BEEN ESTABLISHED DUE TO INSUFFICIENT INFORMATION. ORIGINAL ORIENTATION & DATA: OS NATIONAL GRID (OSTN15) DERIVED FROM GPS

DISCLAIMER

While every effort has been made to ensure that the information obtained by non-invasive geophysical techniques is accurate, factors beyond our control can cause deviations between these techniques and what is actually present in the ground. Non-invasive methods are a combination of non-invasive geophysical techniques, together with previous record drawings where available. Non-invasive methods and the interpretation of the results they yield together with the visible information shall be the responsibility of the manufacturer and supplier. Types of ground conditions, can reduce signal accuracy and therefore CDP cannot guarantee that all required features have been detected or identified. Contact your geophysical method user, otherwise provide, some types of materials such as bitumen, is always highly recommended.

For utility detection, underground cables, valves, systems, old connections etc. are not detected but the presence should be considered.

While every effort has been made to ensure accuracy, CDP cannot be held responsible for any related underground features that are not hatched.

Please exercise due care and diligence when excavating.

REMEMBER - ALWAYS EXCAVATE WITH CARE

SIGNING & SAFETY

A. The Contractor shall provide, erect and maintain such traffic signs, lamps, barriers and traffic control signals, and such measures may be necessitated by the construction of the works in accordance with the recommendations contained in Chapter 8 of the Traffic Signs Manual.

SERVICES

B. All Statutory Undertakers, including cable television companies, must be contacted prior to commencing any works to ascertain the location and depth of their apparatus. In the event of any protection or diversionary works being necessary to their apparatus then any costs incurred will be the contractors responsibility both for arranging and any payment.

KEY:

Denotes Site Development Planning Application Site Boundary (Approx 53,142 m² / 13.13 acres)

Denotes Existing Highway Boundary

The topographical information shown is based on the topographical survey by Ellum Surveys, Dwg no. 8362_2011, dated Nov21

FOR APPROVAL

P2	SH	Base layout updated and client comments incorporated	09.08.22
P1	SH	Preliminary Issue	29.04.22
Rev	By	Details	Date
		(P=Preliminary, T=Tender, C=Construction, R=Record)	

Client:

CANMOOR

Project:

Access Park, Gloucester

Drawing Title:

Section 278 Works
Site Constraints Plan

CDP

CONSULTING CIVIL & STRUCTURAL ENGINEERS
CHARFORD LODGE
ROCK HILL
BROMSGROVE

COMPLETE DESIGN PARTNERSHIP LTD

Date:	Apr 22	Drawing No.		Issue Rev.	
Scale:	As Shown @ A1		17-7295-0101		P
Drawn:	SH				2
Chkd:	JB				

© copyright CDP Ltd

Highway (within ownership)

Component Boundary

METZ WAY

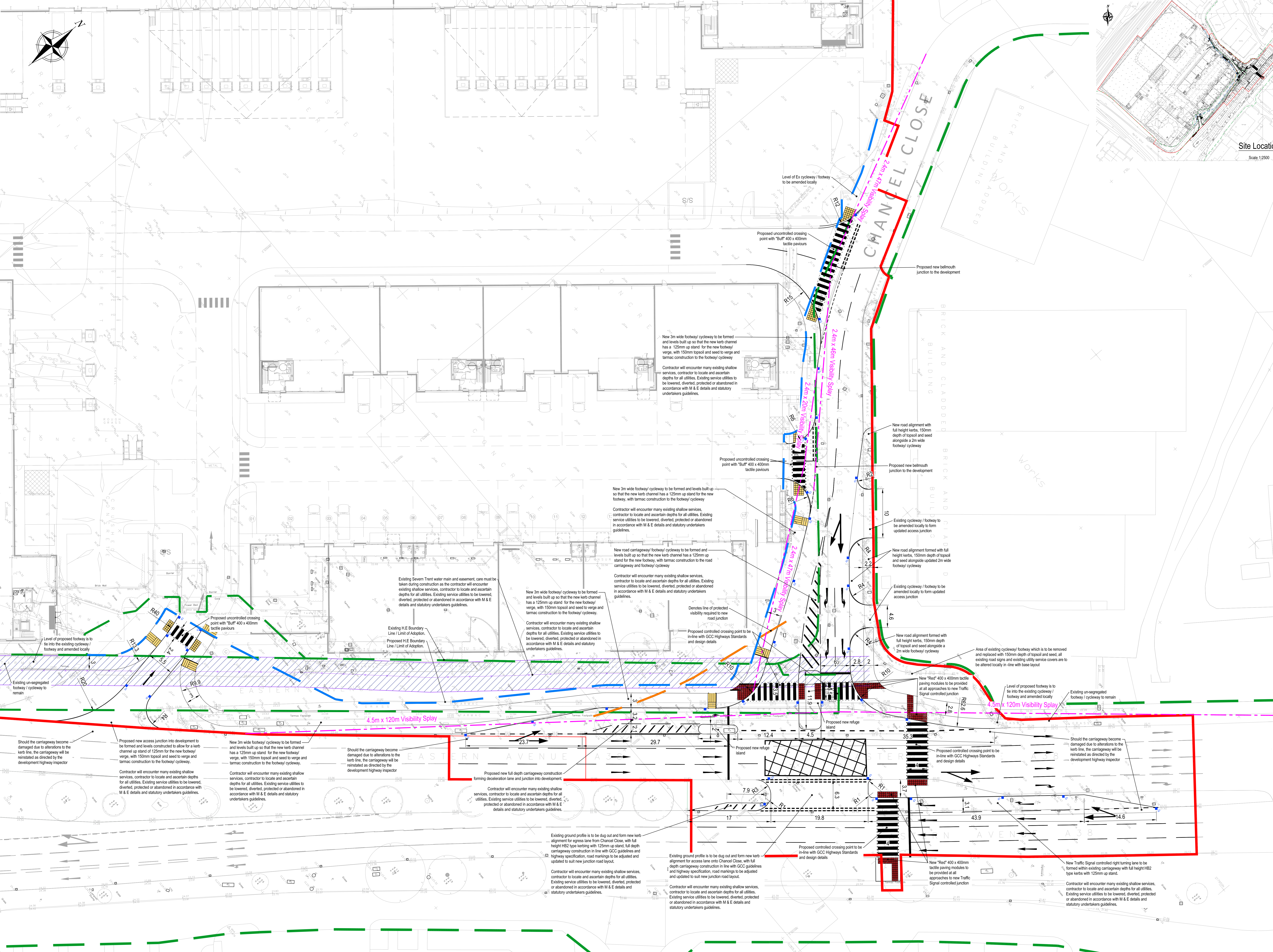
Metz Way

METZ WAY A4303

EASTERN AVENUE A38

Existing Site Plan

Scale 1:500



General Arrangement Layout
Scale 1:250

Notes:
Dimensions provided are indicative only and should be confirmed and read in conjunction with the Architect's construction drawings at such times as they are available, and/or from site measurement.
All setting out to be in accordance with the Architect's drawings, any ambiguities to be raised prior to construction.

No.	RESIDUAL RISK	REGISTER	
		Control Measures	Action By
1	Standard Construction	Risk Assessment	Contractor
2	Works within existing live road carriageway	Risk Assessment	Contractor
3	Shallow Services	Risk Assessment	Contractor & Utility Provider

- NOTES:
- All works to be undertaken in accordance with Gloucestershire County Council Manual for Gloucestershire Streets 3rd Edition & Gloucestershire County Council Highway Standard Drawings.
 - All Statutory Undertakers, including cable television companies, must be contacted prior to commencing any works to ascertain the location and depth of their apparatus. In the event of any protection or diversionary works being necessary to their apparatus then any costs incurred will be the contractors responsibility for arranging and paying for.
 - The Contractor shall provide, erect and maintain such traffic signs, lamps, barriers and traffic control signals and such measures may be necessary for the construction of the works in accordance with the recommendations contained in Chapter 7 of the Traffic Signs Manual.
 - The developer and contractor shall confirm they are working in accordance with N340 Volume 1 Guidelines on the Planning and Control Code of Underground Utilities Apparatus and Volume 2 Guidelines on the Protection of Underground Utilities Apparatus for New Development Sites.
 - Road barrier to be installed at the back of the adopted footpath to prevent the roots from any proposed new trees undermining the tarmac.
 - Retention of the existing kerbs will be subject to inspection and approval by the Local Authority Highway Inspectors.
 - Reuse of the existing kerbs will be subject to inspection and approval by the Local Authority Highway Inspectors. Reconstruction of the existing kerbs to have 300mm kerbs of each kerbstone layer that is required.
 - 150mm x 20mm back edge kerbs with full galvanized and fluted kerbstone.
 - Tactile paving at uncontrolled crossing points to be 400x400mm buff color dotter paving in accordance with DfT guidance on the use of tactile paving.
 - All subsurface structures and unconsolidated material within the construction width of the highway are to be removed.
 - CPI values and calculations may be required to determine sub-base thickness.
 - Boundary walls will not be replaced.
 - Minimum gully girth to have to BS EN 124, Grade D400, non-slip with cast-in hand and fringe. Minimum wetway area 9000mm squared. Frame depth 100mm. BS603 covered outlet.
 - Any existing gullies that are damaged during construction will be replaced with new ones, as agreed with a representative of the Local Authority Highway Department.
 - Head height of structures remains to be confirmed on adoptable carriageway.
 - Tarmac road construction to comply with BS EN 13036.
 - The provision of a CCTV survey of any highway drainage, at the developers expense, is required prior to laying the wearing course.
 - Wherever water services boundary lines are situated together, including boundary boundaries as specified by the Sewerage Undertaker are to be installed.
 - A 'Cover' will be provided to the benefit of the Local Authority engineer that no planting or structure greater than 600mm in height to be permanently situated within the visibility splay.

- LIGHTING
- Lighting columns and brackets, CCTV masts and corridor masts shall be supplied and installed in accordance with the relevant requirements of BS EN 60523, BS EN 60524, BS EN 60525, BS EN 60526, BS EN 60527, BS EN 60528, BS EN 60529, BS EN 60530, BS EN 60531 and all the other requirements of the standards as appropriate. Electrical equipment for road lighting shall comply in general with the Adopting Local Authority equipment and installation specifications, in the event of conflict the Adopting Local Authority specification will take precedence.
 - The lighting columns are to be fitted to BS 4800 (B-25 Dark Grey) (or the equivalent RAL colour with a yellow or white band 0.140.5m wide, 1.5-1.7m from ground level).
 - On completion of street lighting installation, as a requirement of BS 5717 and BS 5718, Wiring Regulations 17th Edition, a completion certificate in the form set out in Appendix 6 of the BS 5717 Standard shall be provided to the L.A. Alternatively a Certificate may be issued from BS 7071 for use in street lighting installation given the E.E Code of Practice for Electrical Safety in Public Lighting Operations.
 - The Contractor shall provide, erect and maintain such traffic signs, lamps, barriers and traffic control signals, and such measures may be necessary for the construction of the works in accordance with the recommendations contained in Chapter 7 of the Traffic Signs Manual.

- SERVICES
- All Statutory Undertakers, including cable television companies, must be contacted prior to commencing any works to ascertain the location and depth of their apparatus. In the event of any protection or diversionary works being necessary to their apparatus then any costs incurred will be the contractors responsibility for arranging and paying for.

- CONCRETE
- Concrete to be C25/30 to BS 8500-2. Maximum aggregate size 20mm. Minimum cement content of 280kg/m³. Maximum water/cement ratio of 0.45.
 - All materials must be approved by the Engineer prior to use. Casting certificates are required for C10 type 1 sub-base material.
 - Contract to be in accordance with BS 112.
 - Foundation concrete to be cast against vertical earth face. Any over excavation to be filled to the appropriate level and compacted, non-tracked, with the appropriate grade concrete specified.
 - All aggregate material to be removed from the plan footprint.
 - The engineer will sign 20mm thick boards for curing (minimum 48 hours minimum) grade BS 400.
 - All excavations for concrete foundations shall be excavated, checked for safe bearing capacity (see above), and labelled with red 200mm concrete in one working day.
 - Any over dig to exceed a suitable formation level and removal of 'soft spots' encountered during excavation works is to be made up in compacted type 1 material or Gen 3 concrete. All formations to be approved by the L.A. Engineer.
 - Foundations are to be positioned centrally about columns/walls (M&E).

- Road Marking Notes
- Reference numbers refer to diagram numbers in The Traffic Signs Manual.
 - Road markings shall be white thermoplastic road.
 - Road markings are to be laid according to the SMM - minimum wetness shown 55 to BS EN 1408.
 - All road markings and traffic signs shall comply with the traffic signs regulations and general directions and are to be in accordance with BS 6821:1.

- KEY:
- Site Development Planning Application Site Boundary (Approx 53.142 m² / 13.13 acres)
 - Existing Highway Boundary
 - Proposed Highway Boundary to be Adopted
 - Water Main & Sewer

FOR APPROVAL

P2 SH Base layout updated and client comments incorporated 09.08.22
 P1 SH Preliminary Issue Details 29.04.22
 Rev By (P=Preparer, T=Tester, C=Constructor, R=Recorder)

Client: CANMOOR

Project: Access Park, Gloucester

Drawing Title: Section 278 General Arrangement

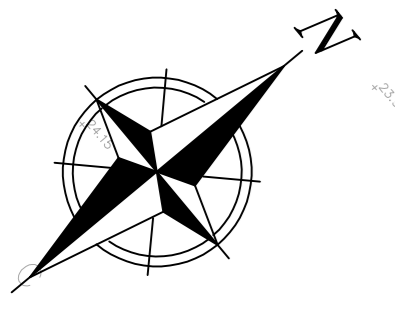
COMPLETE DESIGN PARTNERSHIP LTD

CONSULTING CIVIL & STRUCTURAL ENGINEERS
 CHERRYBROOK LODGE
 ROCK HILL
 BROMSGROVE
 WORCESTER B61 7JH
 TEL: +44 (0)1527 832007
 FAX: +44 (0)1527 832111
 E-mail: admin@cdpltd.com

Date: Apr 22
 Scale: 1:250 @ A0
 Drawn: JB
 Chd: SH

Drawing No: 17-7295-0102
 Issue No: P 2

© copyright CDP Ltd



Notes: DO NOT SCALE DRAWING

Dimensions provided are indicative only and should be confirmed and read in conjunction with the Architect's construction drawings at such times as they are available, and/or from site measurement.

RESIDUAL RISK		REGISTER	
No.	Description of Hazard	Control Measures	Action By
	Standard Construction Works within existing live road carriageway	Risk Assessment	Contractor
	Shallow Services	Risk Assessment	Contractor & Utility Provider

NOTES:

- All works to be undertaken in accordance with Gloucestershire County Council Manual for Gloucestershire Streets 2nd Edition & Gloucestershire County Council Highway Standard Drawings.
- All Statutory Undertakers, including cable television companies, must be contacted prior to commencing any works to ascertain the location and depth of their apparatus. In the event of any protection or diversionary works being necessary in their apparatus then any costs incurred will be the contractors responsibility for arranging any payment.
- The Contractor shall provide, erect and maintain such traffic signs, lamps, barriers and traffic control signals, and such measures may be necessitated by the construction of the works in accordance with the recommendations contained in Chapter 6 of the Traffic Signs Manual.
- The developer and contractor shall comply with the recommendations contained in NRS Volume 1 Guidelines on the Protection and Control Code of Underground Utilities Apparatus and Volume 2 Guidelines on the Protection of Underground Utilities Apparatus for New Development Sites.
- Road kerbs to be marked at the back of the adopted footpath to prevent the roots from any proposed trees undermining the kerbs.
- Reversion of the existing kerbs will be subject to inspection and approval by the Local Authority Highway Inspector.
- Reversion of the existing kerbs will be subject to inspection and approval by the Local Authority Highway Inspector. Reversion of the existing kerbs will be to have 300mm kerbs with 400mm kerbs on the kerbside.
- 150mm 20mm back filling kerbs will be laid to suit and built to footway elevations.
- Existing gullies are to be removed and replaced with new gullies in accordance with the recommendations contained in Chapter 6 of the Traffic Signs Manual.
- All subsurface structures and unrecorded material within the construction width of the highway are to be removed.
- CBM values and calculations may be required to determine sub-base thickness.
- Boundary walls will not be accepted.
- Minimum roadway area 900sqm. Frame depth 100mm. Black covered kerbs.
- Any existing gullies that are damaged during construction will be replaced with new ones, as agreed with a representative of the Local Authority Highway Department.
- Head height of subsurface materials to be removed or acceptable companies.
- Tarmac road construction to comply with BS EN 13106.
- The provision of a CCTV camera at any highway drainage, at the developers expense. In receipt prior to laying the wearing course.
- Wherever water services boundaries have been situated through the site boundary as specified by the Sewerage Undertaker are to be installed.
- A Cover will be provided to the benefit of the Local Authority ensuring that all planting or structure greater than 600mm high is permanently protected after the table top.

Lighting

- Lighting columns and brackets, CCTV masts and camera masts shall be supplied and installed in accordance with the relevant requirements of BS EN 60598-1, BS EN 60598-2, BS EN 60598-3, BS EN 60598-4, BS EN 60598-5, BS EN 60598-6 and BS 5489-2, BS 5489-3 and BS 5489-7 together with the amendments and addenda issued in Clauses 1008, 1019 and 1031 and all other relevant parts of the Series as appropriate. Electrical equipment for road lighting shall comply in general with the Adopting Local Authority equipment and installation specifications, in the event of conflict the Adopting Local Authority specification will take precedence.
- The lighting columns are to be finished to BS 4800 14-B-25 (Dark Grey) (or the equivalent RAL colour with a yellow or white band 1.64-1.6m wide, 1.5-1.7m from ground level).
- On completion of road lighting installation, as a requirement of BS 7171 and BS 7172 Lighting Regulations 17th Edition, a completion certificate in the form set out in Appendix 6 of the British Standard shall be provided to the L.A. Alternatively, a Certificate may be obtained from BS 7171 for use in street lighting installation given the E.E Code of Practice for Electrical Safety in Public Lighting Operations.

Signage & Safety

- The Contractor shall provide, erect and maintain such traffic signs, lamps, barriers and traffic control signals, and such measures may be necessitated by the construction of the works in accordance with the recommendations contained in Chapter 6 of the Traffic Signs Manual.

Concrete

- Concrete to be C35/45 to BS 5895-2. Maximum aggregate size 20mm. Minimum cement content of 280kg/m³ (minimum assessment rate of 0.8).
- All materials must be approved by the Engineer prior to use. Grading certificates are required for C10 type 1 sub-base material.
- Cement to be OPC to BS 12.
- Reinforcement to be steel subject to natural vertical earth loads. Any reinforcement to be fitted to the appropriate levels indicated, nominally, with the appropriate grade concrete specified.
- All aggregate material (spoil) to be removed from the site footprint.
- The Engineer will be given 48 hours notice for checking materials, reinforcement grade etc.
- All excavations for concrete foundations shall be excavated, checked for safe bearing capacity (see above), and filled with one 150mm concrete to one working level.
- Any over dig to reach a suitable formation level and removal of "soft" spoil encountered during excavation works is to be made up in compacted form 1 material or 2 concrete. All formations to be approved by the L.A. Inspector.
- Foundations are to be protected against all column/wall DMO.

Road Marking

- Reference numbers refer to diagram numbers in The Traffic Signs Manual.
- Road markings shall be white thermoplastic.
- Road markings are to be laid according to the BS41: minimum solid resistance class 55 to BS EN 1438.
- All road markings and traffic signs shall comply with the Traffic Signs Regulations and general directions and are to be in accordance with BS 5252 1-3.

FOR APPROVAL

P2 SH Base layout updated and client comments incorporated 09.08.22

P1 Preliminary Issue Details 22.04.22

Rev By (P:Preliminary, T:Tender, C:Construction, R:Record) Date

Client: CANMOOR

Project: Access Park, Gloucester

Drawing Title: Section 278 Site Clearance

Scale: 1:250 @ A0

Date: Apr 22

Drawing No: 17-7295-0103

Issue Rev: P 2

© copyright CDP Ltd

CONSULTING CIVIL & STRUCTURAL ENGINEERS CHERRIFORD LODGE ROCK HILL BRIMSGROVE WORKS RD GL1 2JH

COMPLETE DESIGN PARTNERSHIP LTD

Scale: 1:250 @ A0

Date: Apr 22

Drawing No: 17-7295-0103

Issue Rev: P 2

© copyright CDP Ltd

Scale: 1:250 @ A0

Date: Apr 22

Drawing No: 17-7295-0103

Issue Rev: P 2

© copyright CDP Ltd

Scale: 1:250 @ A0

Date: Apr 22

Drawing No: 17-7295-0103

Issue Rev: P 2

© copyright CDP Ltd

Scale: 1:250 @ A0

Date: Apr 22

Drawing No: 17-7295-0103

Issue Rev: P 2

© copyright CDP Ltd

Scale: 1:250 @ A0

Date: Apr 22

Drawing No: 17-7295-0103

Issue Rev: P 2

© copyright CDP Ltd

Scale: 1:250 @ A0

Date: Apr 22

Drawing No: 17-7295-0103

Issue Rev: P 2

© copyright CDP Ltd

Scale: 1:250 @ A0

Date: Apr 22

Drawing No: 17-7295-0103

Issue Rev: P 2

© copyright CDP Ltd

Scale: 1:250 @ A0

Date: Apr 22

Drawing No: 17-7295-0103

Issue Rev: P 2

© copyright CDP Ltd

Scale: 1:250 @ A0

Date: Apr 22

Drawing No: 17-7295-0103

Issue Rev: P 2

© copyright CDP Ltd

Scale: 1:250 @ A0

Date: Apr 22

Drawing No: 17-7295-0103

Issue Rev: P 2

© copyright CDP Ltd

Scale: 1:250 @ A0

Date: Apr 22

Drawing No: 17-7295-0103

Issue Rev: P 2

© copyright CDP Ltd

Scale: 1:250 @ A0

Date: Apr 22

Drawing No: 17-7295-0103

Issue Rev: P 2

© copyright CDP Ltd

Scale: 1:250 @ A0

Date: Apr 22

Drawing No: 17-7295-0103

Issue Rev: P 2

© copyright CDP Ltd

Scale: 1:250 @ A0

Date: Apr 22

Drawing No: 17-7295-0103

Issue Rev: P 2

© copyright CDP Ltd

Scale: 1:250 @ A0

Date: Apr 22

Drawing No: 17-7295-0103

Issue Rev: P 2

© copyright CDP Ltd

Scale: 1:250 @ A0

Date: Apr 22

Drawing No: 17-7295-0103

Issue Rev: P 2

© copyright CDP Ltd

Scale: 1:250 @ A0

Date: Apr 22

Drawing No: 17-7295-0103

Issue Rev: P 2

© copyright CDP Ltd

Scale: 1:250 @ A0

Date: Apr 22

Drawing No: 17-7295-0103

Issue Rev: P 2

© copyright CDP Ltd

Scale: 1:250 @ A0

Date: Apr 22

Drawing No: 17-7295-0103

Issue Rev: P 2

© copyright CDP Ltd

Scale: 1:250 @ A0

Date: Apr 22

Drawing No: 17-7295-0103

Issue Rev: P 2

© copyright CDP Ltd

Scale: 1:250 @ A0

Date: Apr 22

Drawing No: 17-7295-0103

Issue Rev: P 2

© copyright CDP Ltd

Scale: 1:250 @ A0

Date: Apr 22

Drawing No: 17-7295-0103

Issue Rev: P 2

© copyright CDP Ltd

Scale: 1:250 @ A0

Date: Apr 22

Drawing No: 17-7295-0103

Issue Rev: P 2

© copyright CDP Ltd

Scale: 1:250 @ A0

Date: Apr 22

Drawing No: 17-7295-0103

Issue Rev: P 2

© copyright CDP Ltd

Scale: 1:250 @ A0

Date: Apr 22

Drawing No: 17-7295-0103

Issue Rev: P 2

© copyright CDP Ltd

Scale: 1:250 @ A0

Date: Apr 22

Drawing No: 17-7295-0103

Issue Rev: P 2

© copyright CDP Ltd

Scale: 1:250 @ A0

Date: Apr 22

Drawing No: 17-7295-0103

Issue Rev: P 2

© copyright CDP Ltd

Scale: 1:250 @ A0

Date: Apr 22

Drawing No: 17-7295-0103

Issue Rev: P 2

© copyright CDP Ltd

Scale: 1:250 @ A0

Date: Apr 22

Drawing No: 17-7295-0103

Issue Rev: P 2

© copyright CDP Ltd

Scale: 1:250 @ A0

Date: Apr 22

Drawing No: 17-7295-0103

Issue Rev: P 2

© copyright CDP Ltd

Scale: 1:250 @ A0

Date: Apr 22

Drawing No: 17-7295-0103

Issue Rev: P 2

© copyright CDP Ltd

Scale: 1:250 @ A0

Date: Apr 22

Drawing No: 17-7295-0103

Issue Rev: P 2

© copyright CDP Ltd

Scale: 1:250 @ A0

Date: Apr 22

Drawing No: 17-7295-0103

Issue Rev: P 2

© copyright CDP Ltd

Scale: 1:250 @ A0

Date: Apr 22

Drawing No: 17-7295-0103

Issue Rev: P 2

© copyright CDP Ltd

Scale: 1:250 @ A0

Date: Apr 22

Drawing No: 17-7295-0103

Issue Rev: P 2

© copyright CDP Ltd

Scale: 1:250 @ A0

Date: Apr 22

Drawing No: 17-7295-0103

Issue Rev: P 2

© copyright CDP Ltd

Scale: 1:250 @ A0

Date: Apr 22

Drawing No: 17-7295-0103

Issue Rev: P 2

© copyright CDP Ltd

Scale: 1:250 @ A0

Date: Apr 22

Drawing No: 17-7295-0103

Issue Rev: P 2

© copyright CDP Ltd

Scale: 1:250 @ A0

Date: Apr 22

Drawing No: 17-7295-0103

Issue Rev: P 2

© copyright CDP Ltd

Scale: 1:250 @ A0

Date: Apr 22

Drawing No: 17-7295-0103

Issue Rev: P 2

© copyright CDP Ltd

Scale: 1:250 @ A0

Date: Apr 22

Drawing No: 17-7295-0103

Issue Rev: P 2

© copyright CDP Ltd

Scale: 1:250 @ A0

Date: Apr 22

Drawing No: 17-7295-0103

Issue Rev: P 2

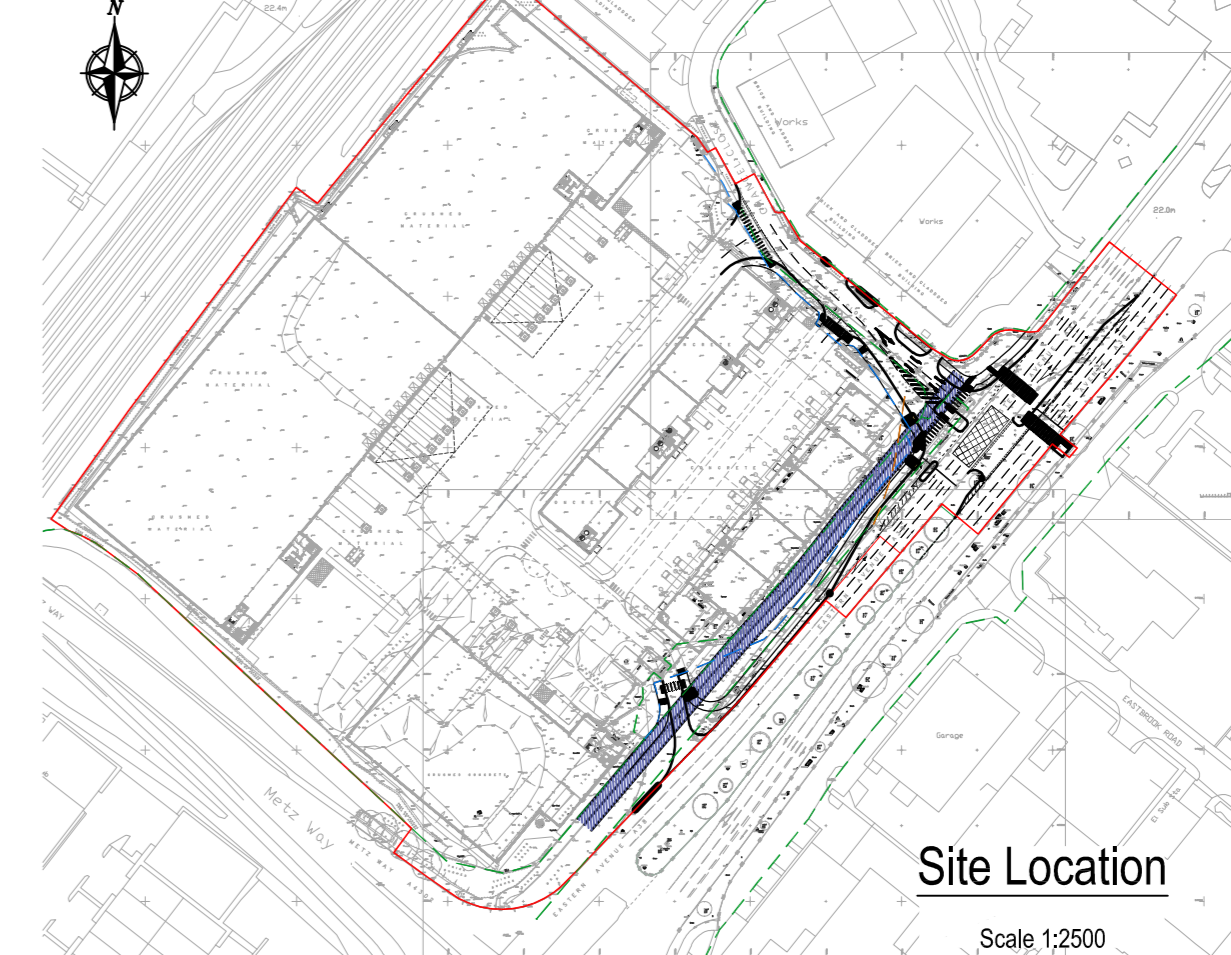
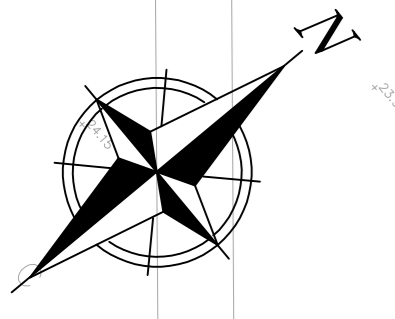
© copyright CDP Ltd

Scale: 1:250 @ A0

Date: Apr 22

Drawing No: 17-7295-0103

Issue Rev: P 2



NOTES:
 Dimensions provided are indicative only and should be confirmed and read in conjunction with the Architect's construction drawings at such times as they are available, and/or from site measurement.
 All setting out to be in accordance with the Architect's drawings, any ambiguities to be raised prior to construction.

RESIDUAL RISK		REGISTER	
No.	Description of Hazard	Control Measures	Action By
	Standard Construction Works within existing live road carriageway	Risk Assessment	Contractor
	Shallow Services	Risk Assessment	Contractor & Utility Provider

- NOTES:**
- All works to be undertaken in accordance with Gloucestershire County Council Manual for Gloucestershire Streets and Roads & Gloucestershire County Council Highway Standard Drawings.
 - All Statutory Undertakers, including cable television companies, must be contacted prior to commencing any works to ascertain the location and depth of their operations. In the event of any pre-identified or otherwise works being necessary to the apparatus then any costs incurred will be the contractors responsibility for arranging any payment.
 - The Contractor shall provide, erect and maintain such traffic signs, lamps, barriers and traffic control signals and such measures may be necessitated by the construction of the works in accordance with the recommendations contained in Chapter 4 of the Traffic Signs Manual.
 - The developer and contractor shall confirm they are working in accordance with NJMG Volume 1 Guidelines on the Planning and Control Code of Underpinning Utilities Apparatus and Volume 2 Guidelines on the Protection of Underground Utilities Apparatus for New Development Sites.
 - Road barrier to be installed at the back of the adopted footpath to prevent the roots from any proposed new trees undermining the footpath.
 - Retention of the existing kerbs will be subject to inspection and approval by the Local Authority Highways Inspector.
 - Re-use of the existing kerb will be subject to inspection and approval by the Local Authority Highways Inspector. Reconstruction of the existing kerb line to have 300mm kerbs with 100mm kerb nosing.
 - 150mm (20mm) back edge kerbs with full curbside and full kerb nosing.
 - Tactile paving at uncontrolled crossing points to be 400x400mm buff color tactile paving in accordance with GCR guidance on the use of tactile paving.
 - All sub-base structures and unconsolidated material within the construction width of the highway, are to be removed.
 - CBR values and calculations may be required to determine sub-base thickness.
 - Boundary walls will not be adopted.
 - Height of gullies shall be in accordance with BS EN 124, Grade D400, non-sloping with capless flat hand and high. Minimum waterway area 900mm squared. Frame depth 100mm. Black coated oxide iron.
 - Any existing gullies that are damaged during construction will be replaced with new ones, as agreed with a representative of the Local Authority Highways Department.
 - Head height of drainage materials to be in accordance with applicable standards.
 - Tarmac and construction to comply with BS EN 13036.
 - The provision of a CCTV survey of any highway drainage, at the developers expense, is required prior to laying the wearing course.
 - On concrete or other water sensitive boundary bases are situated together, maximum boundary is specified by the Sewerage Undertaker and is to be installed by the Local Authority ensuring that no planting or structure greater than 600mm in height to be permanently situated within the 'visibility splay'.
 - Lighting columns and brackets, CCTV masts and similar masts shall be supplied and installed in accordance with the relevant requirements of BS EN 60529, BS EN 60529-2, BS EN 60529-3, BS EN 60529-4, BS EN 60529-5, BS EN 60529-6 and BS 5483-2, BS 5483-5 and BS 5483-7 together with the amendments and addenda issued in Clause 1008, 1310 and 1311 and all other requirements of the British Standard as appropriate. Electrical equipment for road lighting shall comply in general with the Adopting Local Authority equipment and installation specifications, in the event of conflict the Adopting Local Authority specification will take precedence.
 - The lighting columns to be installed to BS 4000 18-25 (Class C) or the equivalent RA1 colour with a yellow or white band 0.440m wide, 1.517m from ground level.
 - On concrete or other water sensitive boundary bases are situated together, maximum boundary is specified by the Sewerage Undertaker and is to be installed by the Local Authority ensuring that no planting or structure greater than 600mm in height to be permanently situated within the 'visibility splay'.
 - The Contractor shall provide, erect and maintain such traffic signs, lamps, barriers and traffic control signals and such measures may be necessitated by the construction of the works in accordance with the recommendations contained in Chapter 4 of the Traffic Signs Manual.

TABLE 1 - PAVEMENT SPECIFICATION

Hatch Type	Layer	Nom. Size	Material	Layer Depth (Thickness)
Road Carriageway Construction for S278 and Industrial Roads				
	Surface Course	14mm	Hot Rolled Asphalt S278 Surf 40/80 per minimum FV 65 with max ANV of 54, to MCHW Series 300 Clause 911	45mm
	Binder Course	20mm	AC20 HDM Bin 40/60 rec to SHW Clause 929	60mm
	Base Course	30mm	AC22 HDM Base 40/60 rec to SHW Clause 929	140mm in 2 layers
	Sub-Base & Capping Layer	CRB 5% & above	Type 1 Sub-base to SHW Clause 803	225mm
		+2.5% - 5%	6F1 or 6F2 Capping Layer to SHW Clause 613	150mm
		Below 2.5%	Type 1 Sub-base to SHW Clause 803	300mm
			6F1 or 6F2 Capping Layer to SHW Clause 613	225mm
Footway Cycleway Construction (Adjacent to carriageways)				
	Surface Course	6mm	AC6 Dense Surf 100/150 to SHW Clause 909	25mm
	Binder Course	20mm	AC20 Dense Bin 100/150 to SHW Clause 906	60mm
	Base Course	32mm	AC12 Dense Base 100/150 to SHW Clause 906	100mm
	Sub-Base	-	Type 1 Sub-base to SHW Clause 803 - Thickness may be increased depending on the CBR Values.	150mm
Road Carriageway In-lie - surface course, binder course & base course construction as per materials noted for Road Carriageways (above) to be in accordance with GCC standard detail drawing GHSD/70001				
Road Carriageway Resurfacing - surface course construction as per materials noted for Road Carriageways (above)				
Tactile Paving to (To be in accordance with GCC standard detail drawings GHSD110087 & 88)				
	Surface Course	-	400x400mm Blister paving - col Red	50mm
	Laying Course	-	400x400 Directional Guidance paving - col Buff	50mm
	Sub-Base	-	AC20 Dense Bin 100/150 to SHW Clause 906	30mm
		-	Type 1 Granular Sub-base material to SHW Clause 803	150mm
Tactile Paving to (To be in accordance with GCC standard detail drawing GHSD110089)				
	Surface Course	-	400x400mm Blister paving - col Red	50mm
	Laying Course	-	AC20 Dense Bin 100/150 to SHW Clause 906	30mm
	Sub-Base	-	Type 1 Granular Sub-base material to SHW Clause 803	150mm
Vege				
	Surface Course	-	Top soil and seed	150mm

Note:
 In the case that the surface course specified for use on the existing highway network is Hot Rolled Asphalt with Pre-Cooled Chippings, developers are strongly encouraged to liaise with their surfacing contractor early in the process to understand the traffic management requirements, so the installation can be programmed correctly.

Abnormal Sites:
 Any site with a CBR Value below 2.5% will be considered by GCC to be an 'abnormal site' and the developer must contact GCC immediately, should any site yield results under 2.5%, a separate ground stabilization design to be completed by the developer's designer and approved by a GCC Engineer, that shall take into account the minimum criteria of sub-soil, water table levels and any other environmental factors that may impact the construction of the highway. This must be agreed prior to construction. The values given in Table 1 are minimum construction layer thicknesses for corresponding CBR Values. It is the developer's responsibility to ensure that any highway proposed for adoption is free of any structural defects and is to the satisfaction of the Highway Authority prior to formal adoption.

CONCRETE
 Concrete to be C25/30 to BS 8500-2. Maximum aggregate size 20mm. Minimum cement content of 280kg/m³. Maximum water/cement ratio of 0.45.
 All materials must be approved by an Engineer prior to use. Casting certificates are required for C10-type 1 sub-base material.
 Cement to be CEM I 32.5.
 Foundation concrete to be cast against natural vertical earth face. Any over excavation to be filled to the appropriate level indicated, non-structurally, with the appropriate grade concrete specified.
 All surplus material (spoil) to be removed from the plan footprint.
 The engineer shall design and specify the correct bedding, reinforcement grade etc.
 All excavations for concrete foundations shall be enclosed, checked for safe bearing capacity (see above) and labelled with rail 30mm concrete in one working day.
 Any over dig to reach suitable formation level and removed 'soft spot' encountered during excavation works to be made up in compacted type 1 material or Gen 3 concrete. All foundations to be approved by the LA's Inspector.
 Foundations are to be positioned centrally about column/wall axis.

Road Marking Notes
 Reference numbers refer to diagram numbers in The Traffic Signs Manual.
 Road markings shall be white thermoplastic based.
 Road markings are to be laid according to the SMM5 - minimum slit resistance does 55 to BS EN 1406. All road markings and traffic signs shall comply with the Traffic Signs Regulations and general directions and are to be in accordance with BS 6821-1:3.

FOR APPROVAL

P2 SH Base layout updated and client comments incorporated 09.08.22
 P1 SH Preliminary Issue Details 29.04.22
 Rev By (P=Preliminary, T=Teaser, C=Construction, R=Record) Date

Client: **CANMOOR**

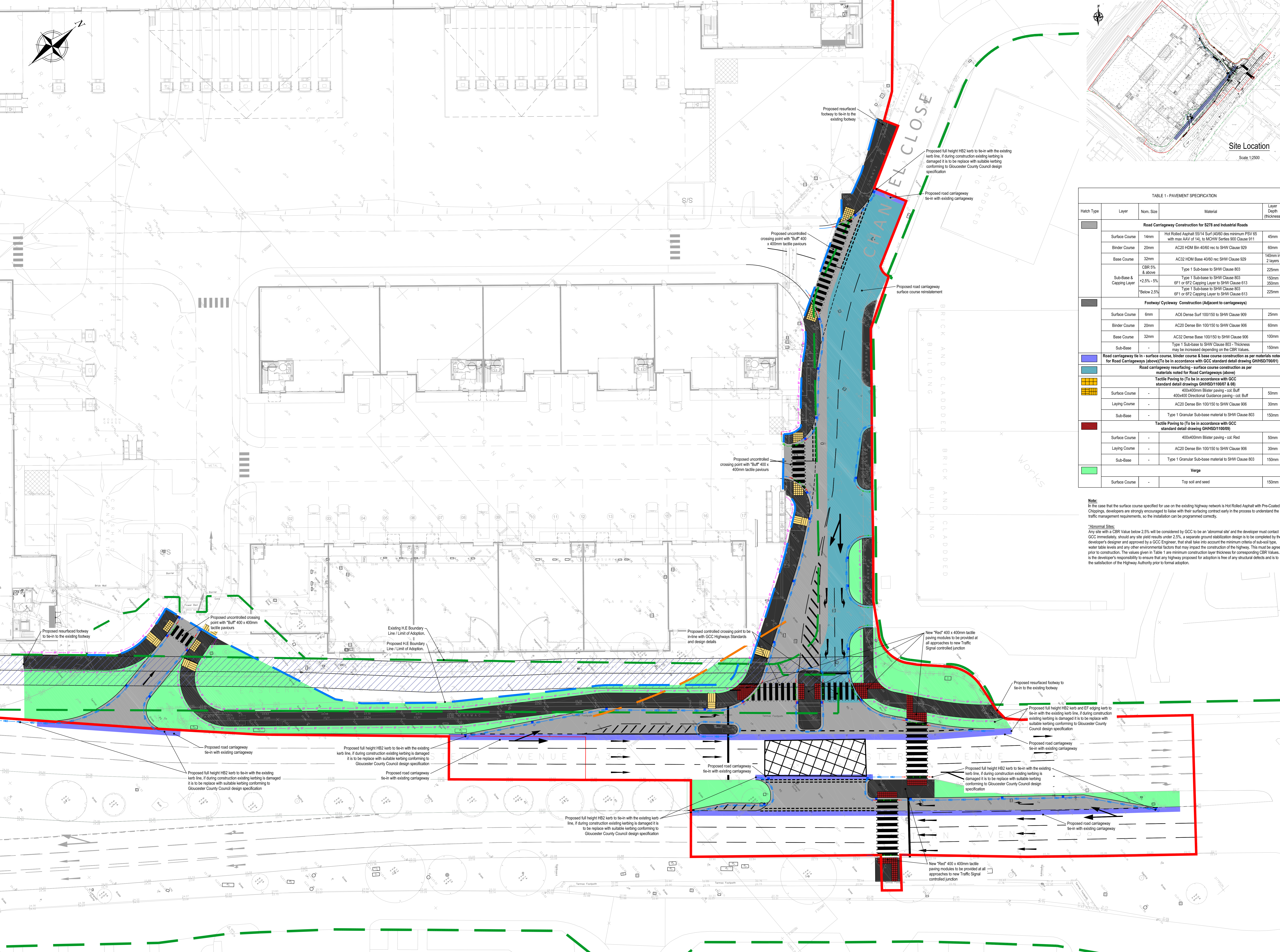
Project: **Access Park, Gloucester**

Drawing Title: **Section 278 External Finishes**

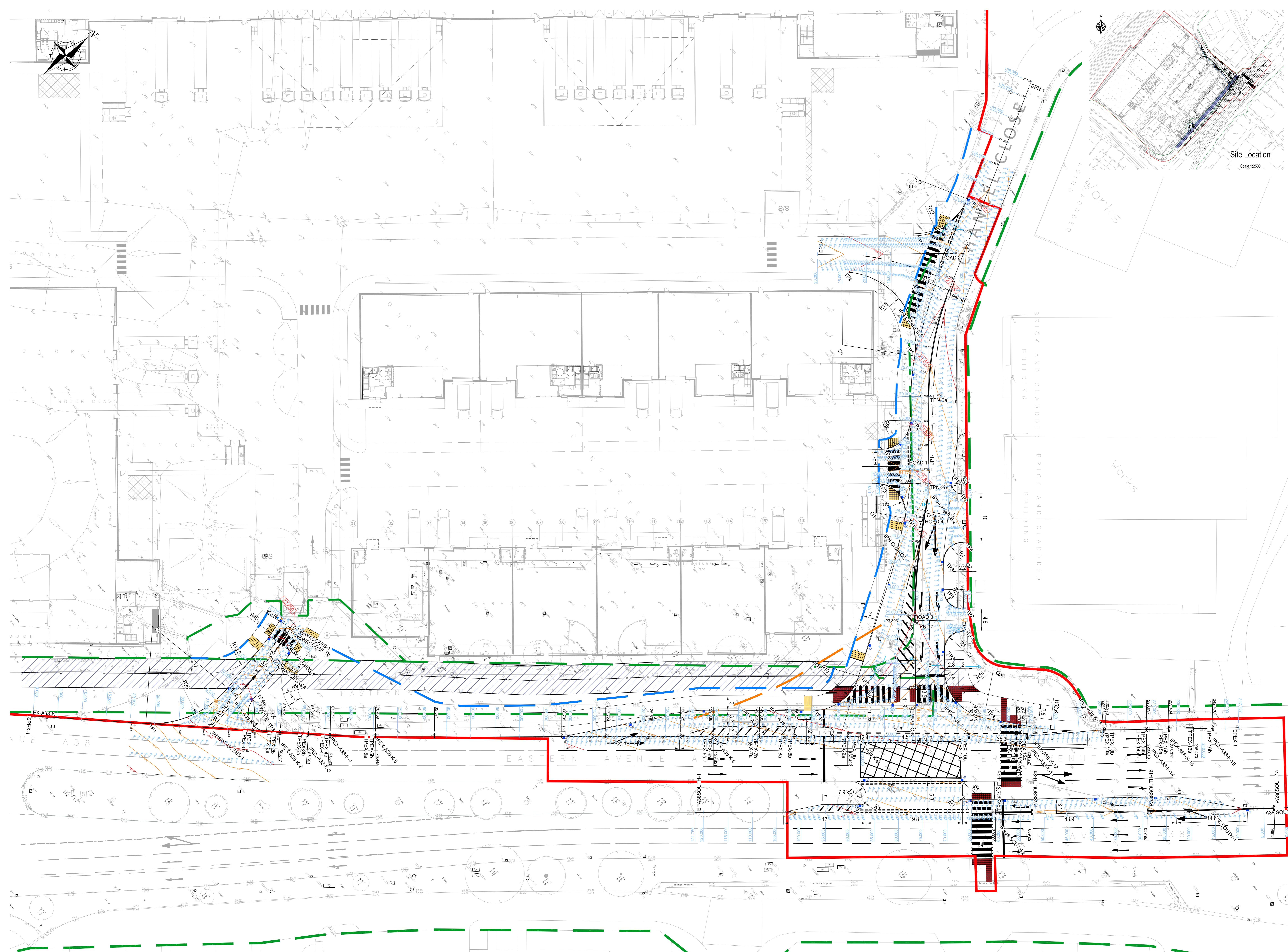
CONSULTING CIVIL & STRUCTURAL ENGINEERS
 CHERRIL LODGE
 BROMSGROVE
 BROMSGROVE

COMPLETE DESIGN PARTNERSHIP LTD

Date: Apr 22 Drawing No: 17-7295-0104 Issue Rev: P 2
 Scale: 1:250 @ A0
 Drawn: SH
 Chd: JB
 © copyright CDP Ltd



External Finishes Layout
 Scale 1:250



NOTES:
 Dimensions provided are indicative only and should be confirmed and read in conjunction with the Architect's construction drawings at such times as they are available, and/or from site measurement.
 All setting out to be in accordance with the Architect's drawings, any ambiguities to be raised prior to construction.

RESIDUAL RISK	REGISTER
Standard Construction	Risk Assessment
Works within existing live road carriageway	Risk Assessment
Shallow Services	Risk Assessment

- NOTES:**
- All works to be undertaken in accordance with Gloucestershire County Council Manual for Gloucestershire Streets 3rd Edition & Gloucestershire County Council Highway Standard Drawings.
 - All Statutory Undertakers, including cable television companies, must be contacted prior to commencing any works to ascertain the location and depth of their apparatus. In the event of any protection or diversionary works being necessary to their apparatus then any costs incurred will be the contractors responsibility both for arranging and any payment.
 - The Contractor shall provide, erect and maintain such traffic signs, lamps, barriers and traffic control signs, and such measures may be necessitated by the construction of the works in accordance with the recommendations contained in Chapter 6 of the Traffic Signs Manual.
 - The developer and contractor shall coordinate their works in accordance with the recommendations contained in the Parking and Control Code of Underground Utilities Apparatus and Volume 2 Guidelines on the Protection and Control Code of Underground Utilities Apparatus and Volume 2 Guidelines on the Protection and Control Code of Underground Utilities Apparatus for New Development Sites.
 - Root barrier to be installed at the back of the adopted footpath to prevent the roots from any proposed new trees undermining the footpath.
 - Retention of the existing kerbs will be subject to inspection and approval by the Local Authority Highways Inspector.
 - Re-use of the existing kerbs will be subject to inspection and approval by the Local Authority Highways Inspector. Reconstruction of the existing kerbs will be to have 200mm concrete to BS EN 124, 200mm concrete to BS EN 124, 40-60 EN 40-4 and BS 5662-2, BS 5662-3, BS 5662-4, BS 5662-5, BS 5662-6 and BS 5662-7 together with the annotations and additional details in Clauses 1009, 1010 and 1011 and all the other requirements of the Site Rules as appropriate. Electrical equipment for road lighting shall comply in general with the Adopting Local Authority equipment and installation specifications, in the event of conflict the adopting Local Authority specification will take precedence.
 - The lighting columns are to be finished to BS 4800 18-25 (Dark Grey) (or the equivalent RAL colour with a yellow or white band 0.440.5m wide, 1.5-1.7m from ground level).
 - On completion of street lighting installation, as a requirement of BS 7171 and BS 5499 Regulations 17th Edition, a completion certificate in the form set out in Appendix 6 of the British Standard shall be provided to the L.A. Alternatively a Certificate may be adopted from BS 7171 for use in street lighting installation given the E.E Code of Practice for Electrical Safety in Public Lighting Operations.
 - Where or where water services boundary lines are situated together (multi-meter boundary) as specified by the Sewerage Undertaker are to be installed.
 - A Cover will be provided to the benefit of the Local Authority ensuring that no planting or structure greater than 600mm in height to be permanently situated within the 'visibility splay'.

- LIGHTING**
- Lighting columns and brackets, CCTV masts and corridor masts shall be supplied and installed in accordance with the relevant requirements of BS EN 40-1, BS EN 40-2, BS EN 40-3, BS EN 40-4, BS EN 40-5, BS EN 40-6 and BS 5662-2, BS 5662-3, BS 5662-4, BS 5662-5 and BS 5662-7 together with the annotations and additional details in Clauses 1009, 1010 and 1011 and all the other requirements of the Site Rules as appropriate. Electrical equipment for road lighting shall comply in general with the Adopting Local Authority equipment and installation specifications, in the event of conflict the adopting Local Authority specification will take precedence.
 - The lighting columns are to be finished to BS 4800 18-25 (Dark Grey) (or the equivalent RAL colour with a yellow or white band 0.440.5m wide, 1.5-1.7m from ground level).
 - On completion of street lighting installation, as a requirement of BS 7171 and BS 5499 Regulations 17th Edition, a completion certificate in the form set out in Appendix 6 of the British Standard shall be provided to the L.A. Alternatively a Certificate may be adopted from BS 7171 for use in street lighting installation given the E.E Code of Practice for Electrical Safety in Public Lighting Operations.

- SPRINKLING & SAFETY**
- The Contractor shall provide, erect and maintain such traffic signs, lamps, barriers and traffic control signs, and such measures may be necessitated by the construction of the works in accordance with the recommendations contained in Chapter 6 of the Traffic Signs Manual.

- SERVICES**
- All Statutory Undertakers, including cable television companies, must be contacted prior to commencing any works to ascertain the location and depth of their apparatus. In the event of any protection or diversionary works being necessary to their apparatus then any costs incurred will be the contractors responsibility both for arranging and any payment.

- CONCRETE**
- Concrete to be C25/30 to BS 5885-2. Maximum aggregate size 20mm. Minimum cement content of 280kg/m³. Maximum water/cement ratio of 0.45.
 - All materials must be approved by the Engineer prior to use. Casting certificates are required for C10-type 1 sub-base material.
 - Comply with BS EN 124.
 - Foundations concrete to be cast against natural vertical earth faces. Any over excavation to be filled to the appropriate level indicated, non-structurally, with the appropriate grade concrete specified.
 - All surplus material to be removed from the plan footprint.
 - The engineer shall sign off the concrete for curing, formwork, reinforcement grades etc.
 - All excavations for concrete foundations shall be enclosed, checked for safe bearing capacity (see above), and labelled with red 300mm concrete in one working day.
 - Any over dig to respect a suitable formation level and removal of 'soft spots' encountered during excavation works to be made up in compacted type 1 material or Gen 3 concrete. All formwork to be approved by the L.A. Inspector.
 - Foundations are to be positioned centrally about columns/walls (M0).

- Road Marking Notes**
- Reference numbers refer to diagram numbers in The Traffic Signs Manual.
 - Road markings shall be white thermoplastic resin.
 - Road markings are to be laid according to the SMM - minimum skid resistance class 55 to BS EN 1408. All road markings and traffic signs shall comply with the traffic signs regulations and general directions and are to be in accordance with BS 6822:1-3.

- KEY:**
- Site Development Planning Application Site Boundary (Approx 53.142 m² / 13.13 acres)
 - Existing Highway Boundary
 - Proposed Highway Boundary to be Adopted

FOR APPROVAL

P2 SH	Base layout updated and client comments incorporated	09.08.22
P1 SH	Preliminary Issue	20.04.22
Rev By	Details	Date
	(P=Preliminary, T=Tender, C=Construction, R=Record)	

Client: **CANMOOR**

Project: **Access Park, Gloucester**

Drawing Title: **Section 278 Setting Out 1 of 2**

COMPLETE DESIGN PARTNERSHIP LTD

CONSULTING CIVIL & STRUCTURAL ENGINEERS
 CHERRIFORD LODGE
 ROCKHILL
 BROMSGROVE

Date: Apr 22	Drawing No: 17-7295-0105	Issue Rev: P 2
Scale: 1:250 @ A0		
Drawn: SH		
Chkd: JB		
© copyright CDP Ltd		

Setting Out Layout
 Scale 1:250